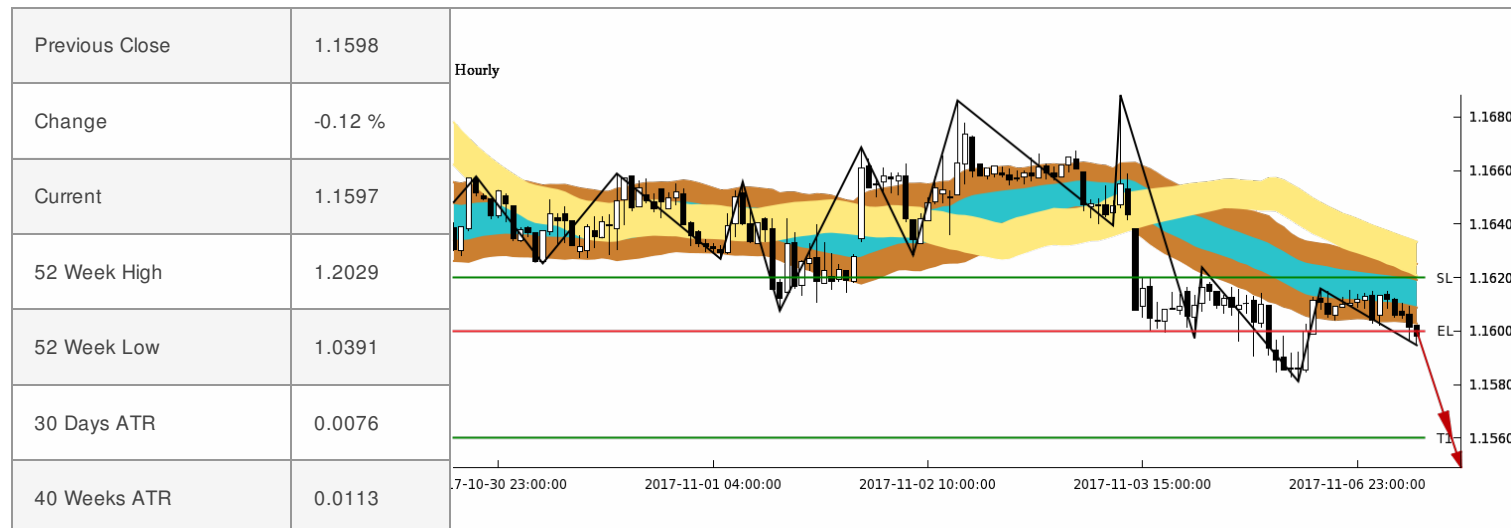





## Trading Signal - 07 / 11 / 2017 - 10:00 (GMT +2)

### Instrument: EURUSD

by: Chief Technical Strategist Avramis Despotis



Time	Trend & Condition	Support & Resistances	Comments	Position & Trade Probability	Entry, Take Profit & Stop Loss Levels	
60min CHART Next 3 Days	 Downwards Strong Neutral	1.1580 1.1620 1.1560 1.1640 1.1530 1.1670	A Medium probability, entry signal to go SHORT was given at 1.1600 after the market found resistance at 1.1620. Only the upward break of 1.1620 would cancel the bearish scenario and take us LONG.	Position	Entry	SL
				SHORT	1.1600	1.1620
				Trade P.	TP1	TP2
				Medium	1.1560	1.1530
240min CHART Next 3 Weeks	 Downwards Strong Neutral	1.1570 1.1640 1.1520 1.1680 1.1450 1.1750	Waiting for a retracement higher towards the 1.1640 resistance level, or alternatively the break of the 1.1570 support level, in order to reinstate SHORT positions.	Position	Entry	SL
				SELL	-	-
				Trade P.	TP1	TP2
				-	1.1520	1.1450
Daily CHART Next 3 Months	 Downwards Strong Oversold 1	1.1570 1.1700 1.1500 1.1800 1.1400 1.1960	Waiting for a retracement higher towards the 1.1700 resistance level, or alternatively the break of the 1.1570 support level, in order to reinstate SHORT positions.	Position	Entry	SL
				SELL	-	-
				Trade P.	TP1	TP2
				-	1.1500	1.1400