



MetaTrader 4 Mobile User Guide

January 2011

Alpari (UK) Limited
201 Bishopsgate
London, EC2M 3AB
United Kingdom

The contents of this document may change.

Copyright© 2010 Alpari (UK) Ltd. All rights reserved.

Important Information – Disclaimer

This document has been provided to you at your unsolicited request. This document is provided to you on the basis that you acknowledge that you have read and understood the following terms:

Alpari (UK) Limited is authorised and regulated by the Financial Services Authority ("FSA") under the Financial Services and Markets Act 2000 and entered on the FSA's Register of authorised persons with registration number 448002. It is registered in the UK, registered number 05284142. Its registered office is 201 Bishopsgate, London, EC2M 3AB.

Confidentiality - This document and its contents are confidential to the person to whom it is delivered and should not be copied, or distributed in whole or in part or disclosed by such persons to any other person without the prior written consent of Alpari (UK) Limited. If you are not the intended recipient you must not use or disclose the information in this document in any way.

Factual Information / No advice: - This document contains purely factual information and is an outline of matters for discussion only. It does not constitute financial product advice and should not be relied on as such. It is indicative only and is not intended to set forth a final expression of the terms and conditions of any financial product. Nothing in this document shall be construed as a solicitation to buy or sell any security or product, or to engage in or refrain from engaging in any transaction. None of the information takes into account your personal objectives, financial situation or needs and you must determine whether the information is appropriate in terms of your particular circumstances. Alpari (UK) Limited is dealing with you exclusively on the basis that you have sufficient knowledge, experience and/or professional financial, tax, legal and other advice to undertake your own assessment of the information.

Not complete - The information contained in this document is subject to discussion, completion and amendment. This document does not contain all the information necessary to fully evaluate an investment in any structure and, as such, no reliance should be placed on the contents of this document.

No offer - No part of the information is to be construed as solicitation, invitation or offer to make a financial investment.

Past Performance - Past performance is not a reliable indication of future performance.

Forward Statements - This document may contain forward-looking statements and estimates ("Forward Statements"). No representation is made or will be made that any Forward Statements will be achieved or will prove to be correct. Actual future results and operation could vary materially from the Forward Statements.

Third Party Information - The material in this document has been prepared in good faith by Alpari (UK) Limited. However, certain parts of this material have been obtained or are based upon information obtained from third parties which may not have been checked or verified. Except to the extent permitted by law, and only to the extent so required, Alpari (UK) Limited makes any warranty in relation to, or accepts any responsibility or liability for any loss or damage suffered by any person arising out of or in relation to the material.

Not legally binding - No proposal put forward in this paper is intended to be binding upon Alpari (UK) Limited, whether by way of agreement, representation or otherwise. Alpari (UK) Limited will not be obliged to carry out any proposals or fulfil any terms mentioned herein and will not be responsible for any loss or damage caused as a result of any person relying upon statements made herein.

Errors and omissions - To the extent permitted by law, Alpari (UK) Limited accepts no responsibility for errors or misstatements, negligent or otherwise. The information may be based on assumptions or market conditions and may change without notice. Unless expressly stated, the information contained in this document is current as at the date of this document. To the maximum extent permitted by law, Alpari (UK) Limited, its respective directors, employees, advisers or agents accept no liability for any loss arising from the use of this document or its contents or otherwise arising in connection with it. Opinions expressed are subject to change without notice. We do not guarantee the integrity of any e-mails or attached files and are not responsible for any changes made to them by any other person.

MT4 Mobile Overview	7
MetaTrader4 Mobile Editions	7
MetaTrader 4 Mobile Comparison Chart	8
MetaTrader 4 Comparison Chart	8
MetaTrader 4 Mobile Versions Differences	9
MetaTrader 4 Mobile System Requirements	11
Phone Edition (Windows Mobile Standard)	11
PDA Edition (Windows Mobile Professional)	11
Download MT4 Mobile setup file	11
Phone Edition (Windows Mobile Standard)	11
Phone Edition (Windows Mobile Standard)	11
MetaTrader 4 Mobile Installation	12
Open Demo Account	13
Login to your account	14
Platform Features	15
Toolbar (Only Available on the PDA edition)	15
Tools	15
About	15
Login	15
Change password	15
Open an Account	15
Alerts	15
Mailbox	15
Options	15
Server Tab	16
Interface Tab	16
Events Tab	16
Exit	16

New Order.....	17
Close Order	18
Charts.....	19
Color Scheme	20
Properties.....	20
Grid.....	20
Auto Scroll	20
Chart Shift	20
Chart on foreground	20
OHLC.....	20
Ask Line	20
Period separators.....	20
Trade levels	20
Volumes	20
Bar Chart	20
Candlesticks	20
Zoom In	20
Zoom Out	20
Refresh Chart	20
Objects	20
Cursor	20
Vertical Line, Horizontal Line, Trendline, Fibonacci Retracement	20
List	21
Indicators	21
Symbols.....	22
Periods	23
Server Connection Indicator	24
Window Tabs.....	24
Quotes.....	24
New Order.....	25
Chart Window	25
Hide	25
Hide All.....	25
Show All.....	25
Symbols.....	25
Arrange	25
High/Low	25

Time	25
Header.....	25
Grid.....	25
Chart	26
OHLCV	26
Trade	27
Operation	27
Price	27
Profit	27
New Order.....	28
Close Order	28
Modify Order	28
View Order	28
Open time	28
Open price.....	28
Current time	28
Current price	28
Commission.....	28
Swap.....	28
Profit	28
Chart Window	28
Trailing stop	28
Profit	28
Summary	28
Credit.....	28
Equity	28
Used margin	28
Free margin	28
Arrange	29
Open Price.....	29
Header.....	29
Grid.....	29
History.....	29
Operation	29
Price	29
Profit	29
View Order	30
Open time	30
Open price.....	30

Current time	30
Current price	30
Commission	30
Swap	30
Profit	30
All History	30
Last Week	30
Today	30
Custom Period	30
Summary	30
Credit	30
Equity	30
Used margin	30
Free margin	30
Arrange	30
Open Price	30
Current Price	30
Header	30
Grid	30
News	31
FAQ	32

MT4 Mobile Overview

MetaTrader 4 Mobile can be downloaded free of charge (if trading via our servers). MetaTrader 4 Mobile implements most of the features found in MetaTrader 4 for PCs:

- Internet trading on Forex, CFDs and precious metals;
- Technical analysis package: up to 30 indicators and 4 chart objects;
- Internal mail and many other useful features;
- Trading on the move.

MetaTrader 4 for Mobiles is offered free of charge to both our [Demo](#) and [Live customers](#).

MetaTrader4 Mobile Editions

Please choose the **Metatrader 4 Mobile** version for your device:

Phone Edition(Windows Mobile Standard)



PDA Edition(Windows Mobile Professional)



MetaTrader 4 Mobile Comparison Chart

Features	MT4 Mobile Phone Edition	MT4 Mobile PDA Edition
Build-in indicators	12	30
Chart Objects (Cursor, Trendline etc)	No	Yes
Languages	2	3

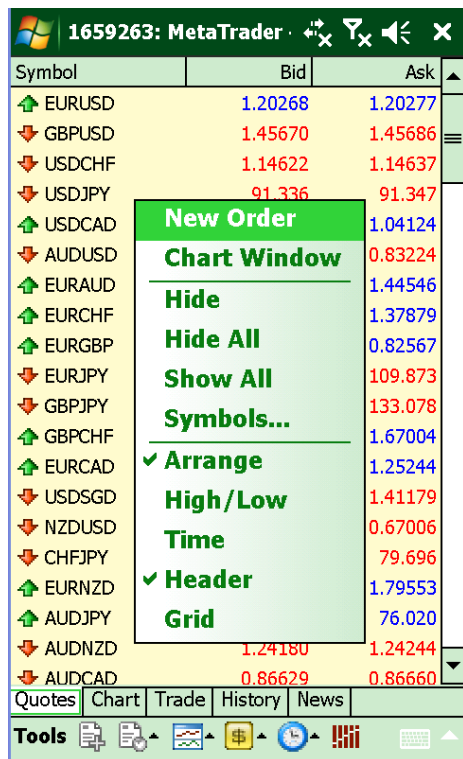
MetaTrader 4 Comparison Chart

	MT4 for Windows	MT4 for Windows Mobile Standard	MT4 for Windows Mobile Professional
Device Type	PC	Phone Edition	PDA Edition
Platform features			
Built-in indicators	30	12	30
Custom Indicators	Yes	No	No
EA	Yes	No	No
Languages	28	2	3
Online Library	Yes	No	No
History Centre	Yes	No	No
Strategy Tester	Yes	No	No
Account History	Yes	Yes	Yes
Reports	Yes	No	No
News	Yes	Yes	Yes
Alerts	Yes	Yes	Yes
Internal mail	Yes	Yes	Yes
Journal	Yes	No	No
Charts	Yes	Yes*	Yes*
Line Studies	Yes	No	Yes*
Account Types			
Micro	Yes	Yes	Yes
Classic	Yes	Yes	Yes
Pro	Yes	Yes	Yes
Trading			
Instant Execution	Yes	Yes	Yes
Pending order types	4 types	4 types	4 types
Trailing Stop	Yes	Yes	Yes

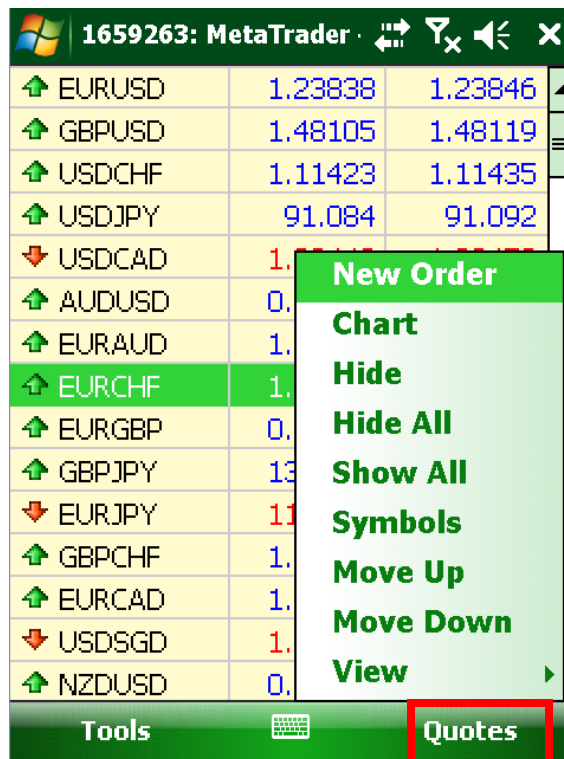
* Stripped down version. Only one chart at a time. PC version has more chart objects.

MetaTrader 4 Mobile Versions Differences

In each category, such as Quotes, you will need to use the button on the right (eg Quotes), rather than pressing down on the main screen.

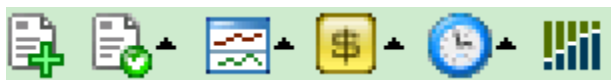


MT4 Mobile for PDA Edition




MT4 Mobile for Phone Edition

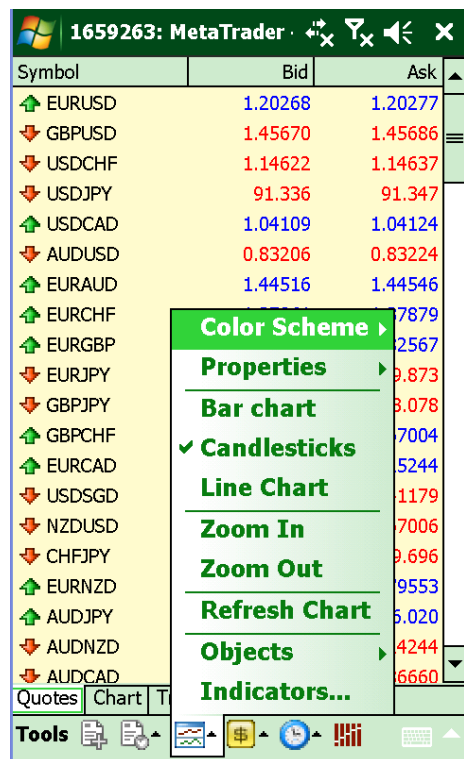
MT4 Mobile Phone Edition does not have buttons on the toolbar.



(MT4 Mobile PDA Edition only)

However, you will be able to access the same information or functionality from another location. For

example, the information from  can be accessed from **Tools> Tabs> Chart** and then pressing the 'Chart' button on the right.



MT4 Mobile for PDA Edition



MT4 Mobile for Phone Edition

MetaTrader 4 Mobile System Requirements

MetaTrader 4 Mobile was designed by MetaQuotes to run on Microsoft Windows Mobile Operating System, this operating system offers two editions.

Various versions of both OS have been released since MetaQuotes released MetaTrader 4 Mobile, below are the required OS versions for your MetaTrader 4 Mobile to operate in your device.

Phone Edition (Windows Mobile Standard)

Windows Mobile 2003, Windows Mobile 5 Standard, Windows Mobile 6-6.5.3 Standard.

PDA Edition (Windows Mobile Professional)

Windows Pocket PC 2002, Windows Mobile 5 Professional, Windows Mobile 6-6.5.3 Professional.

Download MT4 Mobile setup file

To install MetaTrader 4 Mobile in your device, you will need to choose the correct setup file for your device.

Phone Edition (Windows Mobile Standard)

To install the MetaTrader 4 Mobile for the above edition, please download the following:

MetaTrader 4 Mobile SE EXE-file [\[Link\]](#)

For installation from your PC to your device, you can install using ActiveSync.

MetaTrader 4 Mobile SE CAB-file [\[Link\]](#)

Move the .CAB file to your device, run it and follow the on screen instructions.

Phone Edition (Windows Mobile Standard)

To install the MetaTrader 4 Mobile for the above edition, please download the following:

MetaTrader 4 Mobile EXE-file [\[Link\]](#)

For installation from your PC to your device, you can install using ActiveSync.

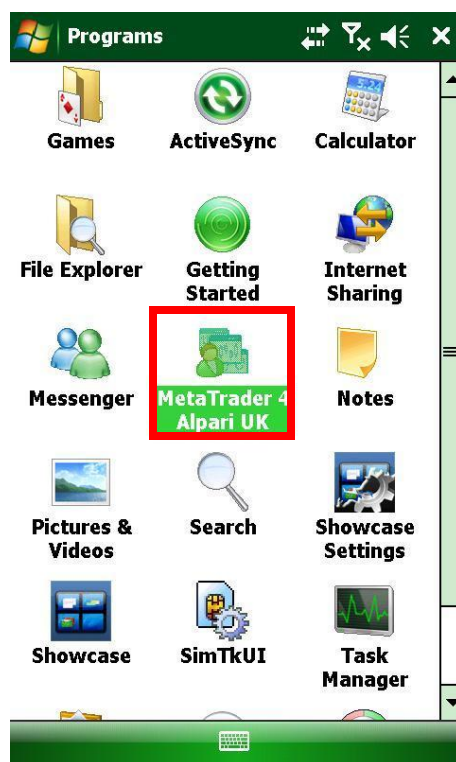
MetaTrader 4 Mobile CAB-file [\[Link\]](#)

Move the .CAB file to your device, run it and follow the on screen instructions.

MetaTrader 4 Mobile Installation

MT4 Mobile can be installed by launching the mt4mobile installation CAB-file on your windows mobile device directly or by running mt4mobilesetup EXE-file on your PC connected to your windows mobile device via ActiveSync.

Once you have run the installation file and installed it, the Alpari MetaTrader 4 Mobile icon will appear in the Programs menu.



PDA Edition (Windows Mobile Professional)

In order to use **MetaTrader 4 Mobile** for **Windows Mobile Device**, you need to connect your windows mobile device to the Internet. To do this you need a device with internet access (if you require more details please refer to your mobile operator).

If you have any problems or enquiries regarding the Internet connection to your Pocket PC you should contact your mobile operator's technical support.

Some windows mobile devices allow you to connect to the Internet using WiFi technology.

Once you have connected to the Internet you can start up **MetaTrader 4 Mobile** by clicking the Alpari MT4 Mobile icon, which can be found under Start > Programs > MetaTrader 4 Alpari UK. On start up you will be given the option to open a demo account. After completing your personal details, check the box "I agree to subscribe to your newsletters" and press the Next button.

911: MetaTrader - Alpari

Open an Account: personal details

Name: Joe Bloggs
Country: United Kingdom
State: London
City: London
Zip code: EC2M 3AB
Address: 201 Bishopsgate
Phone: 02074262900
Email: support@alpari.co.uk
Deposit: 5000
Account: USD USD
Leverage: 1:100

☒ I agree to subscribe to your newsletters

< Back Next > Cancel



PDA Edition (Open Demo Account)

Open Demo Account

If you wish to open a demo account later you can do this by using the “Tools -> **Open an Account**” menu sequence.

911: MetaTrader - Alpari

Symbol	Bid	Ask
USDCHF	0.96237	0.96248
GBPUSD	1.57769	1.57782
USDJPY	80.965	80.977
EURUSD	1.40219	1.40226
AUDUSD	0.98673	0.98688
USDCAD	1.01874	1.01886
EURGBP	0.88872	0.88880
EURCHF	1.34942	1.34961
EURJPY	113.519	113.534
GBPJPY	127.740	127.756

About

Login

Change Password

Open an Account

Alerts

Mailbox

Options

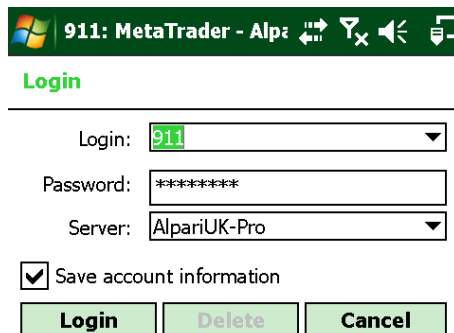
Exit

News

Tools

Login to your account

In order to login to your live account follow the " **Tools-> Login**" menu, type the login and password of your live account, select the relevant server ('AlpariUK-Classic-1', 'AlpariUK-Micro-2' etc) and press the Login button.



911: MetaTrader - Alpari

Login

Login: 911

Password: *****

Server: AlpariUK-Pro

☒ Save account information

Login Delete Cancel



PDA Edition (*Login to MetaTrader 4 for Mobile*)

Platform Features

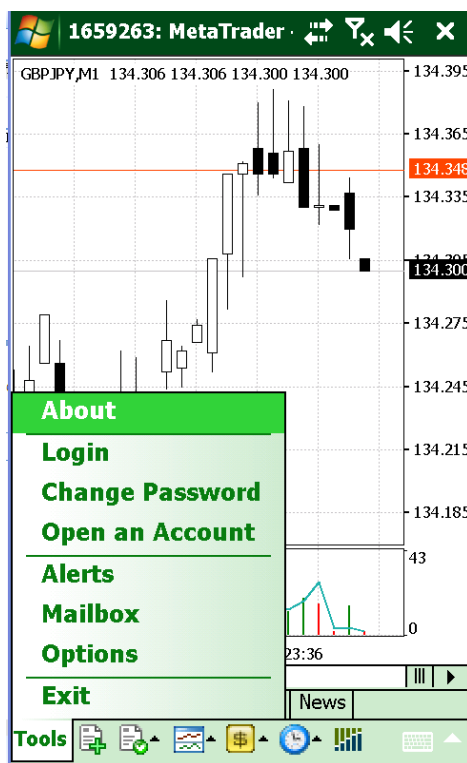
For an overview of MetaTrader 4 Mobile platform features please check the comparison chart.

Toolbar (Only Available on the PDA edition)

The toolbar in Mobile Terminal includes the following commands:

Tools

The "Tools" menu is located in the bottom-left corner of the mobile terminal, near the toolbar, and represents a set of commands that manage the mobile terminal.



The "Tools" menu contains the following commands:

About - the "About" window provides information about Alpari and their contact details, as well as information regarding the current build version of MetaTrader 4 Mobile.

Login - the "Login" window allows you to enter your account login details there: you will need to specify your account number, password and server.

Change password - a new master/investor password can be set up here.

Open an Account - a new demo account can be opened from here.

Alerts - various sound alerts can be viewed and set up here.

Mailbox - internal mail can be viewed here.

Options - there are three tabs: Server; Interface; and Events.

Server Tab - In the Server tab, you can select a server to connect to, set up and modify passwords, configure the proxy server, and enable/disable keeping personal settings and data.

Interface Tab - In the Interface tab, you can choose your language (English, German or Russian), set the maximum number of bars in a chart, and enable/disable news.

Note on number of bars in a chart: The displaying of bars is limited by the mobile device parameters. Bars displayed in the chart are used to calculate the values of technical indicators. If many indicators are attached simultaneously and there is a lot of data to be displayed, free resources of the mobile device (processor load and free memory) can be exhausted. To avoid such situations, one can set the amount of data to be displayed in the charts. This can be done by choosing a suitable value in the popup list or by manual entering it in the field of "Max bars in chart". Any amount of bars can be entered.

Events Tab - In the Events tab, System event sounds can be set up in the terminal. It is a very helpful tool that informs you about changes in the terminal status.

Before setting up the sounds, it is necessary to flag the "Enable" option. The table containing the system events list and the list of corresponding actions will be activated. System events are the following:

- Connect** - connection to the server. Notification of successful connection to the server;
- Disconnect** - no connection to the server. Notification of disconnection from the server;
- Email Notify** - notification of receiving a message via email. Mailbox is located in "Tools - Mailbox" menu;
- Timeout** - a certain time period is provided to perform a trade operation. If this time has lapsed for some reason, the operation will not be performed and this signal will be triggered;
- OK** - notification that a trade operation has been successfully performed;
- News** - notification of news;
- Alert** - notification of alerts being triggered;
- Re-Quote** - notification that the price on the screen is no longer available for trading;
- Trailing Stop** - notification of trailing stops being triggered.

A sound signal can be disabled/enabled by double-clicking on the item or by flagging/unflagging in the field to the left of the name. When a signal triggers, a wave file corresponding to the event will run. Wave files are located in the "sounds" folder of the mobile terminal. Wave file names are determined by the program, they cannot be changed.

Exit - this will close the terminal and end your session with the server.



New Order is used to open a new order in your trading account.

This command opens the New Order window. A new position can be opened or a new pending order can be placed in this window. The following must be specified here: symbol, trade size in lots, order type (market or pending), Stop Loss and Take Profit levels.

Order

Symbol: USDCHF, US Dollar vs Swiss Fran
Type: Instant Execution
Lots: 0.00
S/L: 0.00000 T/P: 0.00000
Comment:
Maximum deviation ☐ 0
1.15185/1.15200
Sell Buy
Tools



Close Order is used to close an existing position.

This command only becomes active if there are open positions. You can also manage orders here.

The button to "Close #XXXXXXX ..." will appear alongside "Sell" and "Buy", where XXXXXXXX is the position ticket number.

1659263: MetaTrader 4 ok

Order #109299569 buy 0.01 USDCAD
at 1.00937 sl: 0.00000 tp:

Symbol: USDCAD, US Dollar vs Canadian Dollar
Type: Instant Execution
Lots: 0.01
S/L: 0.00000 T/P: 0.00000
Comment:

Maximum deviation 0

1.02779/1.02800

Sell Buy

Close #109299569 at 1.02779

109299569: buy 0.01 usdcad

Tools



Charts this will allow the user control over the chart for the chosen symbol.

This command includes commands that control the chart and technical indicators attached to it.



The following commands are available in the Charts toolbar:

Color Scheme- predefined colours for the chart. There are three colour structures available in the terminal: "Green on Black", "Yellow on Black", or "Black on White".

Properties - chart parameters setup. When you click on Properties, a submenu with the following commands will open:

Grid - shows/hides the grid in the chart window.

Auto Scroll - automatic update of chart information, if this option is enabled the latest bar is always shown in the chart.

Chart Shift - moves the chart from the right border of the window by 20% of the screen size.

Chart on foreground - places the chart on the top of the screen. If this function is enabled, all analytical objects will always be "under" the chart.

OHLC - shows/hides the OHLC line. An additional line will appear in the upper-left part of the window. In it, besides symbol name and chart timeframe, the prices of the latest bar are listed. They are recorded in the following format: OPEN, HIGH, LOW, CLOSE (OHLC) - the bar open price, the bar highest price, the bar lowest price, and the bar close price, respectively.

Ask Line - shows/hides the Ask price level of the latest quote. Bars are built and displayed in the terminal on Bid prices only. However, Ask price is used for opening of long positions and for closing of short positions. Ask is not shown in the chart, so it cannot be seen. For better control of trading, one can enable the "Ask line" parameter. An additional red line will appear in the chart to the Ask price of the latest bar.

Period separators - shows/hides period separators. Data and time of each bar are shown on the horizontal axis of the chart. The tick spacing of this horizontal scale will be the selected period (timeframe). The "Show period separators" option draws in additional vertical lines that correspond with the borders of a larger timeframe.

Trade levels - shows/hides trade levels. Lines for open and pending orders are shown directly in the chart and allow you to see where the position was opened and when the pending order, Stop Loss or Take Profit will trigger. To enable it, flag the "Show trade levels" option and press "OK". Lines that correspond with prices of opened positions and pending orders will appear in the chart.

Volumes - shows/hides volume chart in the lower part of the window.

Bar Chart - displays the chart as a sequence of bars;

Candlesticks - display the chart as a sequence of "candlesticks";

Zoom In - zooms into the chart by adjusting the scaling. You can also zoom in by turning the mobile device joystick down;

Zoom Out - zooms out the chart by adjusting the scaling. You can also zoom out by turning the mobile device joystick up;

Refresh Chart - this will refresh existing chart by updating the information from the server;

Objects - the following commands are available in the submenu:

Cursor - allows you to select and move all objects attached to the chart.

Vertical Line, Horizontal Line, Trendline, Fibonacci Retracement, are all built-in chart objects in the mobile terminal;

Menu Command	Description
Horizontal Line	Horizontal line is used to mark different levels, particularly support/resistance levels. One point must be set in order to locate the object in the chart.
Vertical Line	Vertical line is used to mark different borders on the time axis and to compare indicators' signals to the price changes. One point must be set in order to locate the object in the chart.
Trendline	Trendline helps you to identify the direction in of price movement. Two points must be set to locate a trendline.
Fibonacci Levels	Chart object based on Fibonacci's number sequence. Each member of the sequence is approximately 1.618 more than the preceding one, and each preceding number makes about 0.618 of the next one. The tool is built on two points that determine the trendline. Horizontal lines that intersect the trendline on Fibonacci levels 0.0%, 23.6%, 38.2%, 50%, 61.8%, 100%, 161.8%, 261.8%, and 423.6%, are drawn automatically.

List - lists the chart objects in use. You one can modify ("Modify") or delete ("Delete") the selected object here;

Indicators - contain the full list of built-in indicators in the mobile terminal. From this window, one can attach an indicator to a chart, change the settings of indicators already attached, or delete the indicator from the chart. More details are given in the "Technical Indicators" section on the main website.



Symbols control the chart symbol.

After a symbol has been selected using this command, the corresponding changes are made in the window/tab "Chart" and the "Chart" tab becomes active automatically. One can also switch between symbols using the window/tab "Symbols";





Periods control the chart timeframe (period).

After a timeframe has been selected using this command, the corresponding changes are made in the window/tab "Chart" and the "Chart" tab becomes active automatically;



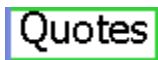
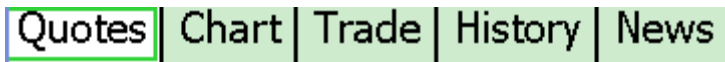


Server Connection Indicator shows the connection status.

- If it is fully red, this means there is no connection with the selected server.
- If it is green/red, this means that the terminal is trying to connect to the server.
- If it is green/blue, this means that you are connected to the server.

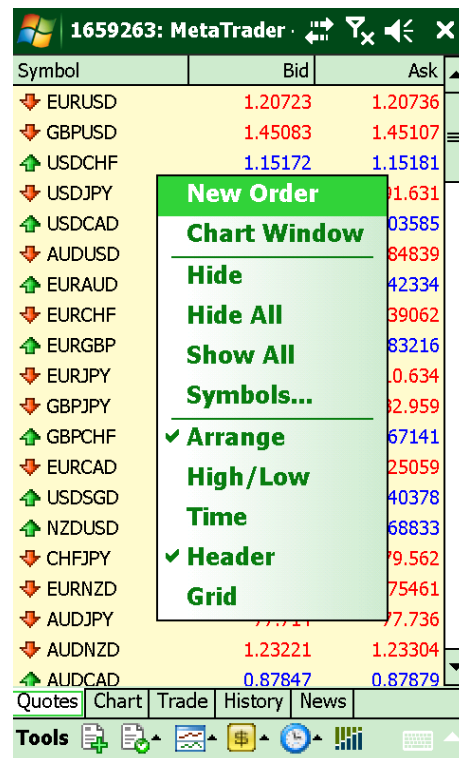
Window Tabs

The window tabs contain the following data:



Quotes window display a list of symbols available under your trading account.

Using commands of this window by pressing down on the screen, one can manage trade positions and charts.



If you press down in the Quotes window, the following options will appear:

New Order is used to open a new order in your trading account.

Chart Window is used to open the chart for the selected symbol.

Hide if pressed will hide the selected symbol.

Hide All if pressed will hide all symbols except 1-3 symbols by default.

Show All if pressed will show all available symbols to trading account.

Symbols will allow the user to pick symbols individually or by group, to display in the quotes window.

Arrange if selected will arrange the columns to fit into the quotes window.

High/Low if selected it will display the high/low prices for the symbols

Time shows/hides the time for last updated price.

Header shows/hides columns header.

Grid shows/hides the grid separating columns and rows.

Chart

Chart window displays chart of the selected symbol for data analyses.

Along with price dynamics, various analytical objects can be placed on the chart: line studies and technical indicators.



If you press down anywhere in the charts window, the crosshair will appear displaying current price as well as OHLCV.

OHLCV

Charts show the price dynamics, but it is often very difficult to determine exact parameters of the bar by eye. The "Show OHLC" option is very helpful in such situations. It places an additional information line in the upper left corner of each chart. Here, besides the symbol name and chart period, prices of the last bar are listed. They are formatted as follows: OPEN, HIGH, LOW and CLOSE (OHLC) — open price of the bar, the highest price of the bar, the lowest price of the bar, the close price of the bar, and the volume of trade quotes of the bar, respectively. Thus, the exact value of the last bar can always be seen.

Trade

Trade window displays information about the current account status, open positions and pending orders placed.

You can bring up extra options (New Order, Close Order, Modify Order, View Order, Chart Window, Trailing Stop, Profit, Summary, Arrange, Open Price, Current Price, Header, and Grid) by pressing down on the screen.

1659263: MetaTrader		
Operation	Price	Profit
buy 0.01 usdcad	1.02510	15.34
Balance: 5 109.59		14.99
Margin: 2.00		
buy limit 0.05 usdjpy	91.418	91.000
<div> <div>New Order</div> <div>Close Order</div> <div>Modify Order</div> <div>View Order</div> <div>Chart Window</div> <div>Trailing stop</div> <div>Profit</div> <div>Summary</div> <div>✓ Arrange</div> <div>Open Price</div> <div>✓ Current Price</div> <div>✓ Header</div> <div>✓ Grid</div> </div>		
Quotes	Chart	Trade
Tools		

All open positions are sorted by creation date: from the earliest to the latest from top to bottom. They are followed by the account balance line and the open positions financial result line, which are followed by the list of pending orders. When a pending order triggers, a new position will be opened and the pending order line will be deleted. It will be replaced with an open position line.

All trade operations are displayed as a table with the following columns fields (from left to right):

Operation - type of the trade operation, the amount of participating lots, name of the symbol participating in the operation. There are the following types of trade operations: "Buy" - long position, "Sell" - short position, and pending orders Sell Stop, Sell Limit, Buy Stop and Buy Limit. The minimum trade size is determined by account type, and the maximum by the deposit available;

Price - the current price of the symbol (not to be confused with position open price described below);

Profit - positive figures denote profit, negative figures denote loss. For pending orders, the opening price of a pending order is shown in the same field.

This Trade window allows you to view open positions and pending orders, as well as to trade.

One can do the following here: open a new position, place, modify or delete a pending order, and close a position. To do all this, one has to use context menu commands. The following commands are available from the context menu of the "Trade" window/tab:

New Order opens a new order. The window appears with this command. One can open a new position or place a pending order. The following will be set up there: symbol, amount of lots, order type (market order or pending order), Stop Loss and Take Profit levels.

Close Order closes an open position. This command only becomes active if there are open positions. You can also manage orders here. The button to "Close #XXXXXXX ..." will appear alongside "Sell" and "Buy", where XXXXXXX is the position ticket number.

Modify Order changes values of Stop Loss and/or Take Profit of open positions or the opening price of a pending order. If Take Profit/Stop Loss level is too close to the current market price, the error message will appear and the levels will not be placed. Then it is necessary to move the levels from the current price and try again.

View Order - displays information about the selected order, the information includes:

Open time: position open time. Time is displayed in YYYY.MM.DD HH:MM format;

Open price: open position price;

Current time: the current mobile terminal time; it shows our server time in EET;

Current price: order current trading price;

Commission: display commission cost per trade;

Swap: overnight financing charges;

Profit: floating P/L, revalued at current price

Chart Window displays chart of the selected symbol for data analyses.

Trailing stop place, modify or delete the "Trailing stop" level. One can activate trailing stop with the specified parameter by selecting the desired level in the menu. "None" is used to disable the order. "Delete All" will disable all trailing stops.

Profit shows profit/loss in points, in the order currency, or in the deposit currency;

Summary shows/hides the financial result on all open positions. It includes:

Credit shows/hides information on credit;

Equity show/hide information on the current equity considering the unrealized profits on open positions. $\text{Equity} = \text{Balance} \pm \text{floating PL}$;

Used margin shows/hides information on the amount of funds held as margin on open trades;

Free margin shows/hides information on the funds available to open new positions. $\text{Free margin} = \text{Equity} - \text{margin held on open trades}$.

Arrange if selected will arrange the columns to fit into the quotes window.

Open Price - shows/hides column containing open prices.

Header shows/hides columns header.

Grid shows/hides the grid separating columns and rows.

History

History window displays all the trading activity information on closed trades.

Operation	Price	Profit
buy 0.01 audusd	0.85613	-76.64
sell 0.09 usdjpy	89.481	239.28
buy 0.01 usdcad	1.02499	15.24
sell 1.00 usdchf	1.14537	-24.45
Profit/Loss: 148.54 Total:		148.54

View

- All History
- Last Week
- Today
- Custom Period...
- Summary ▶
- ✓ Arrange
- Open Price
- ✓ Current Price
- ✓ Header
- ✓ Grid

Quotes | Chart | Trade | History | News

Tools

Account history is represented as a table with the following fields (from left to right):

Operation - type of the trade operation, the amount of participating lots, name of the symbol participating in the operation. There are the following types of trade operations: "Buy" - long position, "Sell" - short position, and pending orders Sell Stop, Sell Limit, Buy Stop and Buy Limit. The minimum trade size is determined by account type, and the maximum by the deposit available;

Price - the current price of the symbol (not to be confused with position open price described below);

Profit - positive figures denote profit, negative figures denote loss. For pending orders, the opening price of a pending order is shown in the same field.

If you press down in the History window, the following options will appear:

View allows you to view the following information on a closed trade:

View Order - displays information about the selected order, the information includes:

Open time: position open time. Time is displayed in YYYY.MM.DD HH:MM format;

Open price: open position price;

Current time: the current mobile terminal time; it shows our server time in EET;

Current price: order current trading price;

Commission: display commission cost per trade;

Swap: overnight financing charges;

Profit: floating P/L, revalued at current price

All History shows all the trades placed in the trading account after archiving period, please check website for information regarding this.

Last Week shows trades from the current week.

Today shows trades from today only.

Custom Period... shows history for a selected period.

A window will appear, in which one can select the preset ranges (field "Period") or set them manually in the fields of "From" and "To";

Summary shows/hides the financial result on all open positions. It includes:

Credit shows/hides information on credit;

Equity show/hide information on the current equity considering the unrealized profits on open positions. $\text{Equity} = \text{Balance} \pm \text{floating PL}$;

Used margin shows/hides information on the amount of funds held as margin on open trades;

Free margin shows/hides information on the funds available to open new positions. $\text{Free margin} = \text{Equity} - \text{margin held on open trades}$.

Arrange if selected will arrange the columns to fit into the quotes window.

Open Price shows/hides column containing open prices.

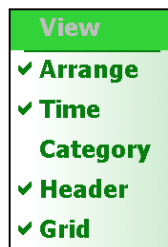
Current Price shows/hides column containing current trading prices.

Header shows/hides columns header.

Grid shows/hides the grid separating columns and rows.

News

News window list all the incoming news as provided by our news provider.



FAQ

Is MT4 Mobile exactly the same as MT4 for PCs?

No. MT4 Mobile is in essence a stripped down version of MT4 for PCs. For the main differences, please refer to the [comparison table](#).

Is my iPhone compatible with MT4 Mobile?

No. MT4 Mobile is only compatible with devices running Windows Mobile 5, 6, 6.1, 6.5.3.

Is my Blackberry compatible with MT4 Mobile?

No. MT4 Mobile is only compatible with devices running Windows Mobile 5, 6, 6.1, 6.5.3.

Can I use my own indicators on MT4 Mobile?

No. It is not possible to download custom indicators on MT4 Mobile.

Can I use EAs on MT4 Mobile?

No. It is not possible to use EAs.

Which phones do you recommend?

We cannot advise which models to use. However, please note that whichever model you use, it will need to have Windows Mobile 5, 6, 6.1 or 6.5.3 as the operating system.

Can I have multiple charts open on MT4 Mobile?

No. it is only possible to have one chart open at a time.

Can I log into my account from my PC and my mobile device at the same time?

Yes. It is possible to log into the same account simultaneously from different locations.

Can I run two MT4 Mobiles in the same phone?

No. It is not possible to run two instances of MT4 Mobile, due to the constraints of the Windows Mobile operating system.

How much data traffic does MT4 Mobile use?

Unfortunately, we cannot provide specific figures on this. However, MT4 Mobile is designed to use less bandwidth than its PC counterpart. Please contact your internet provider if you are unsure of the specifics of your tariff. We also recommend that you use unlimited internet access.

Which internet tariff would you recommend, if I were to use MT4 Mobile?

We would recommend a tariff with unlimited data. Please check with your mobile phone provider regarding specific restrictions.

I have just purchased a new Windows Phone 7 device; will MT4 mobile work on this device?

No. MT4 Mobile is only compatible with devices running Windows Mobile 5, 6, 6.1, 6.5.3.

