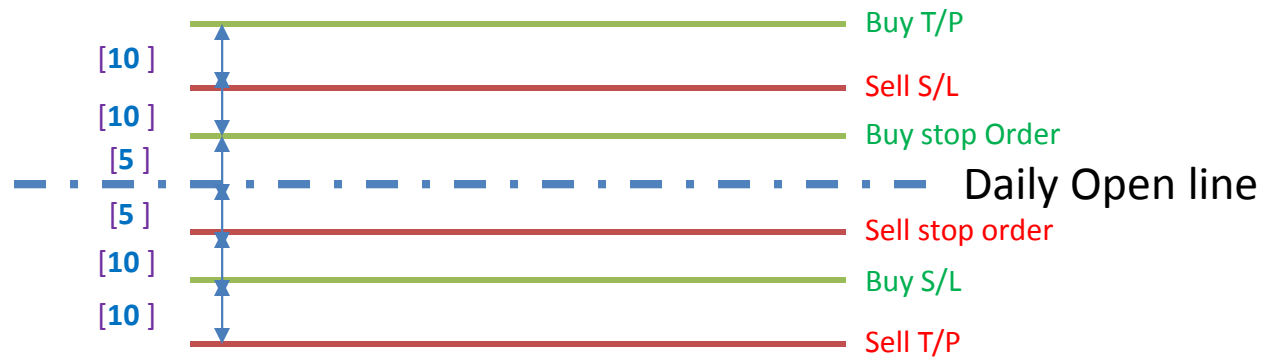


# DAILY HEDGE

# Hedge Strategy - I



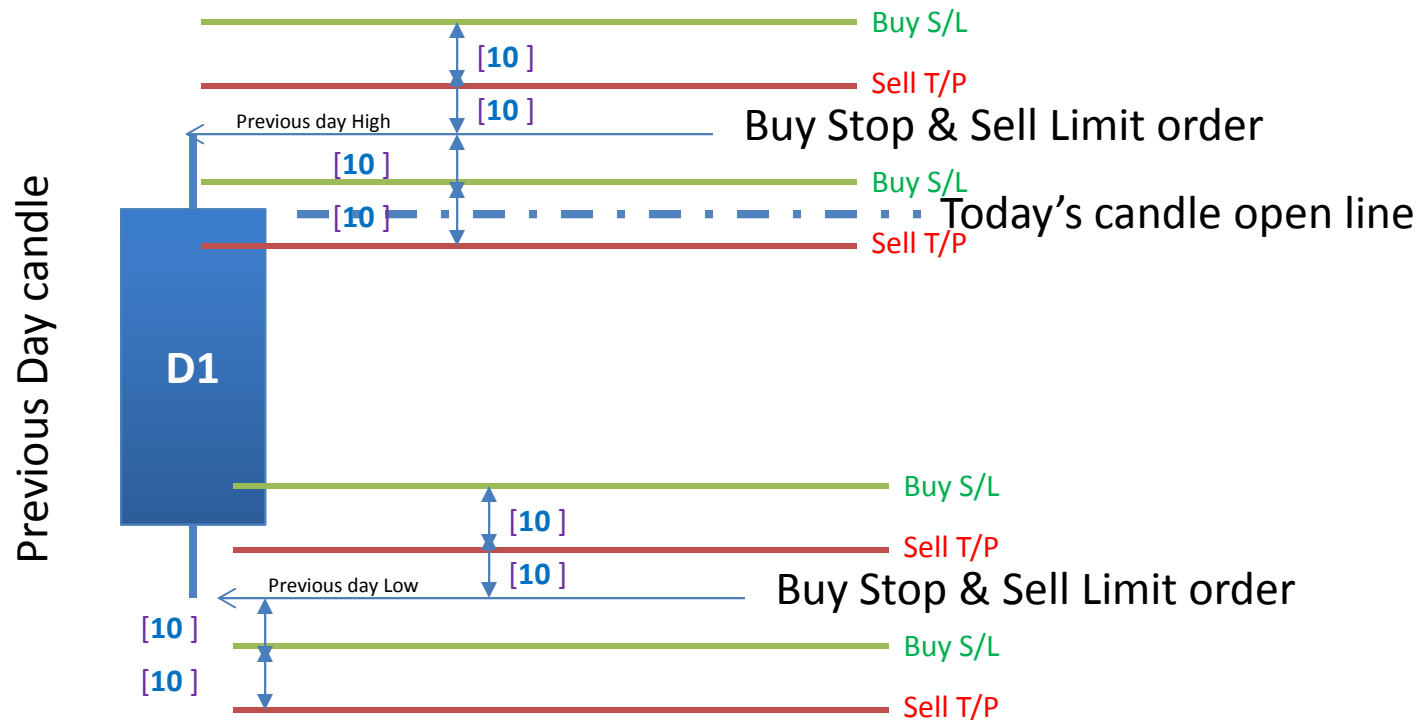
- [ X ] configurable Pips options
- Orders should be placed when daily candle start
- GMT configuration option for Broker timing

# Hedge Strategy - II



- [ X ] configurable Pips options
- Orders should be placed when daily candle start
- GMT configuration option for Broker timing

# Hedge Strategy - III



- [ X ] configurable Pips options
- Broker GMT configuration Options
- If any of the Stop & Limit orders did not get triggered, then it should canceled @ 23hr of the candle time
- Able to switch on-off any of these 3 strategy on the EA configurations