

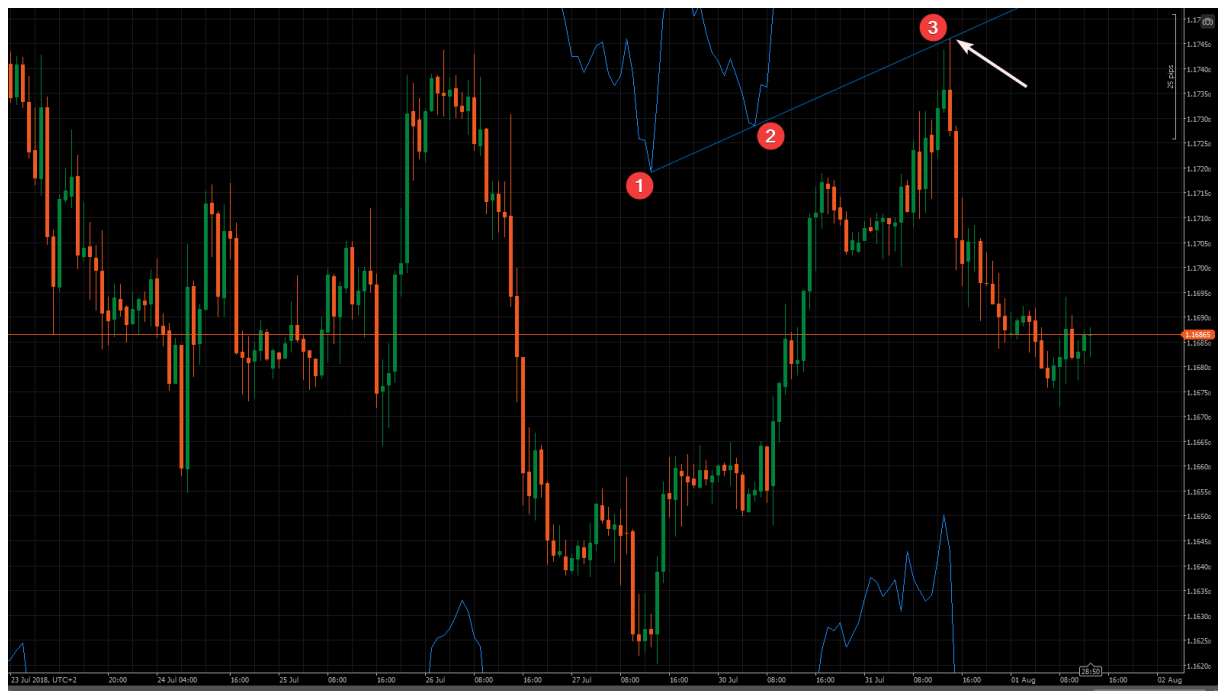
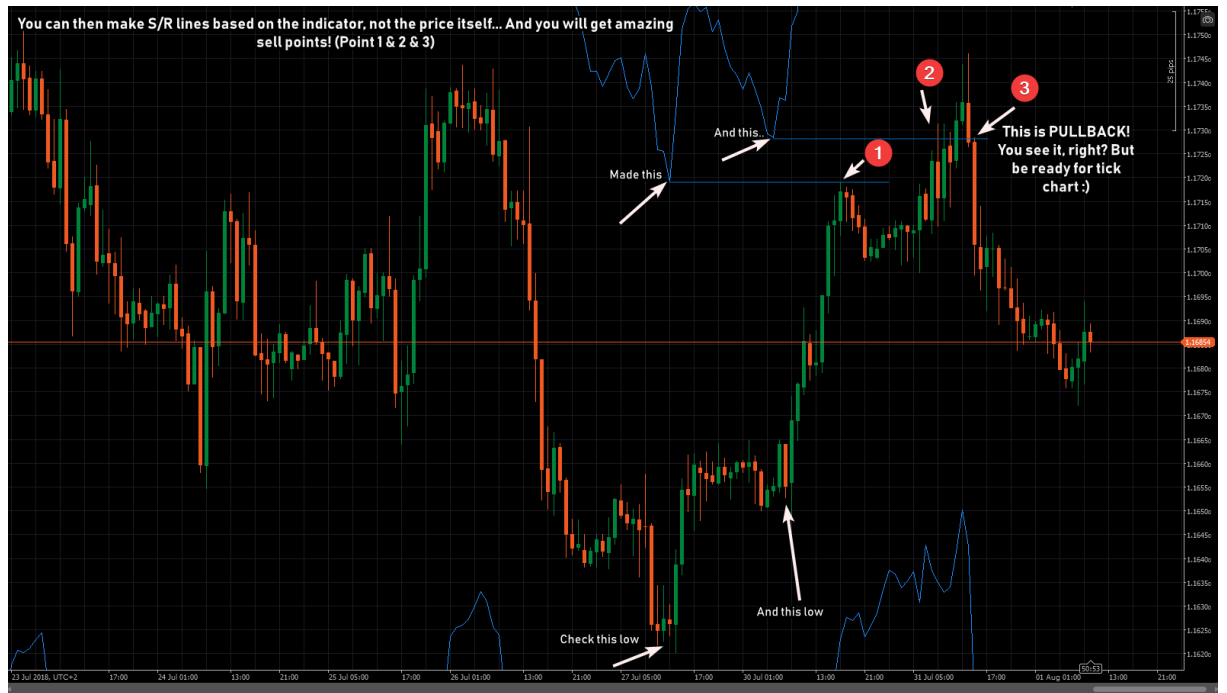
Silent Father System

Potential Entries:

- S/R
- Trendlines
- Horizontal lines
- Overlapping Channels
- Patterns
- Divergence
- Channel Touching last price H/L

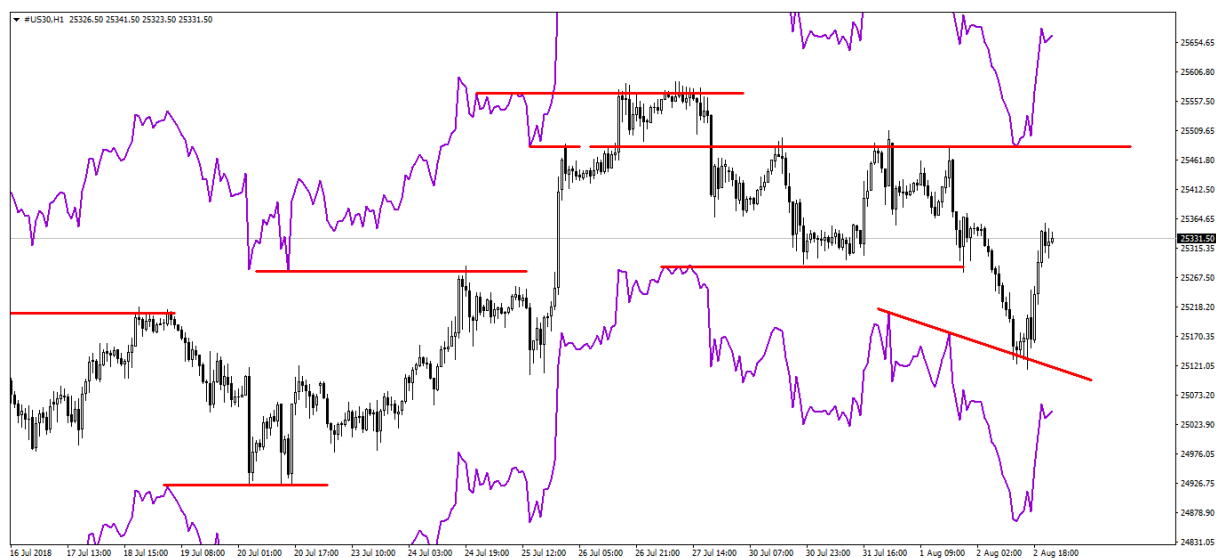
- Trend Change guidelines

S/R Lines:

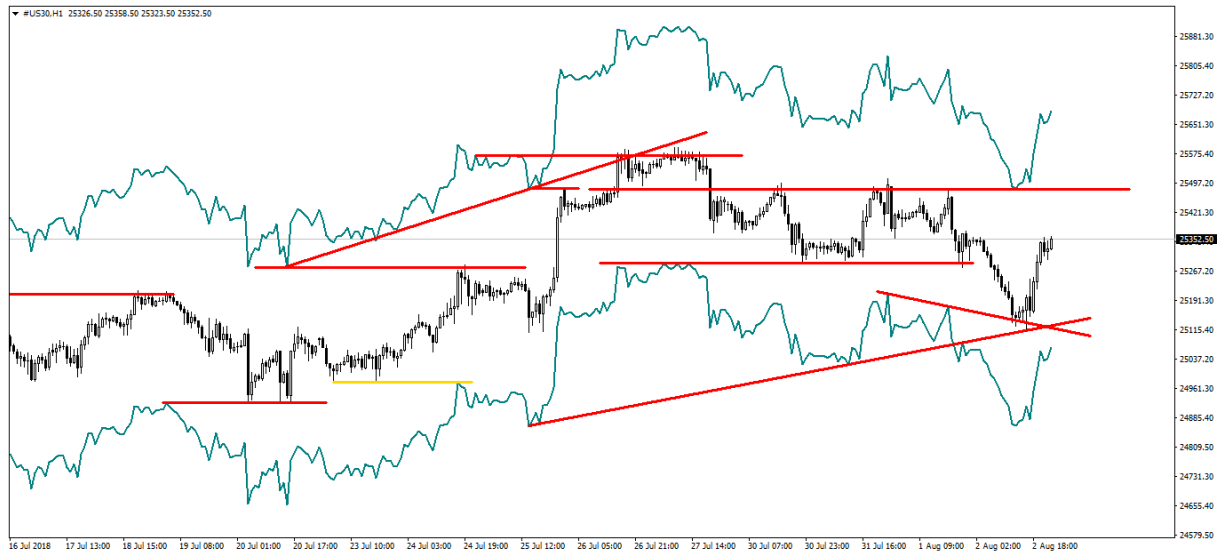




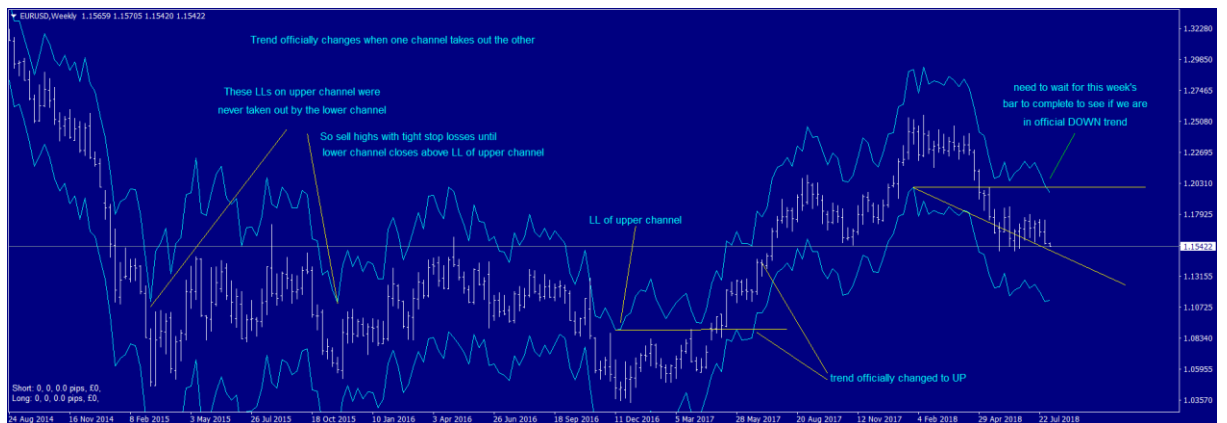
Horizontal Lines:

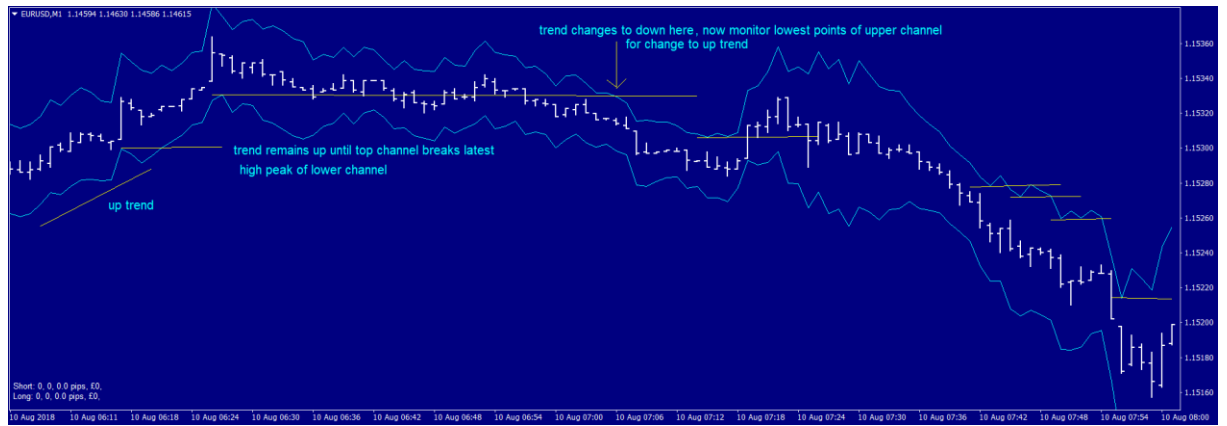


(both horizontal, and trendlines)

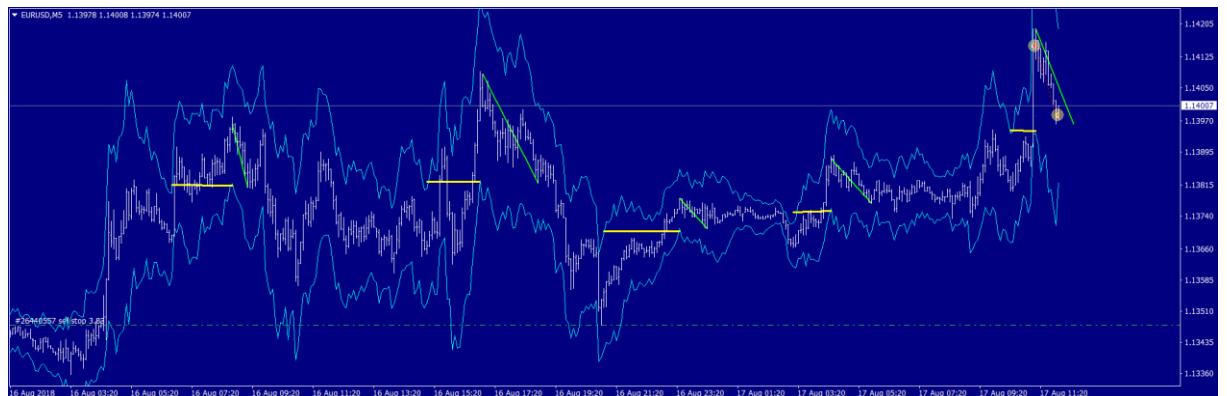


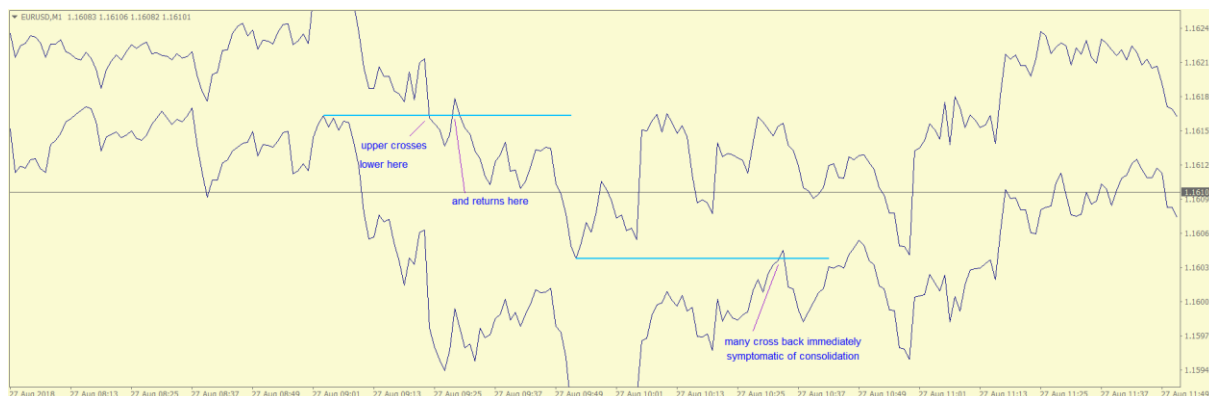
Trend Change:



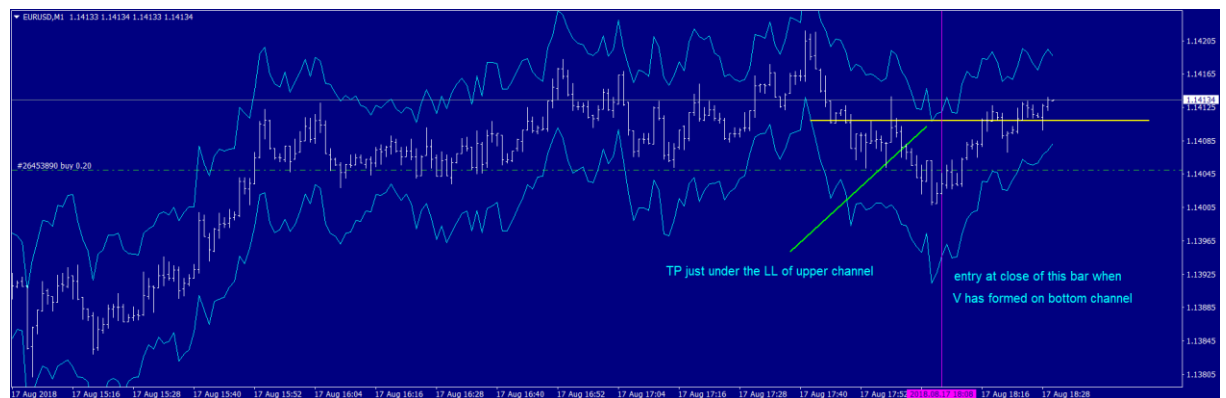
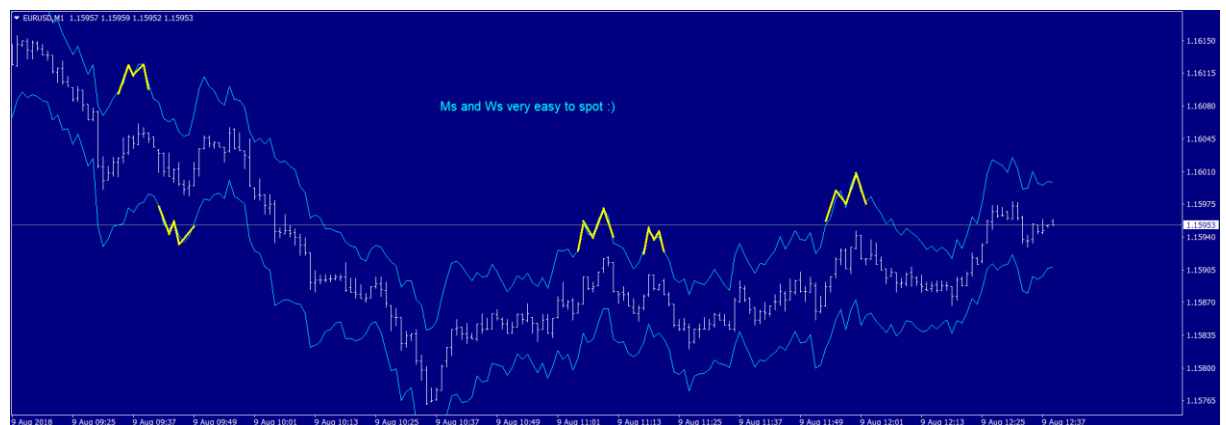


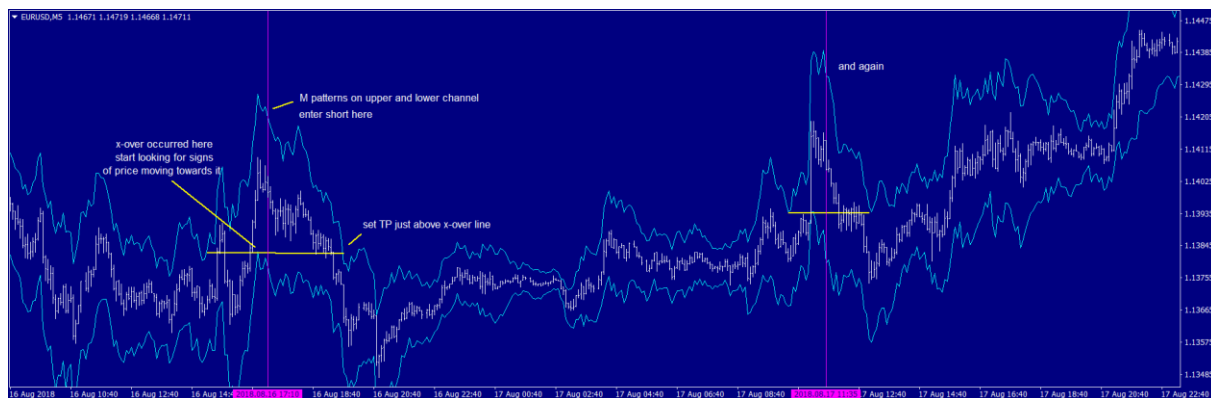
Overlapping Channels:



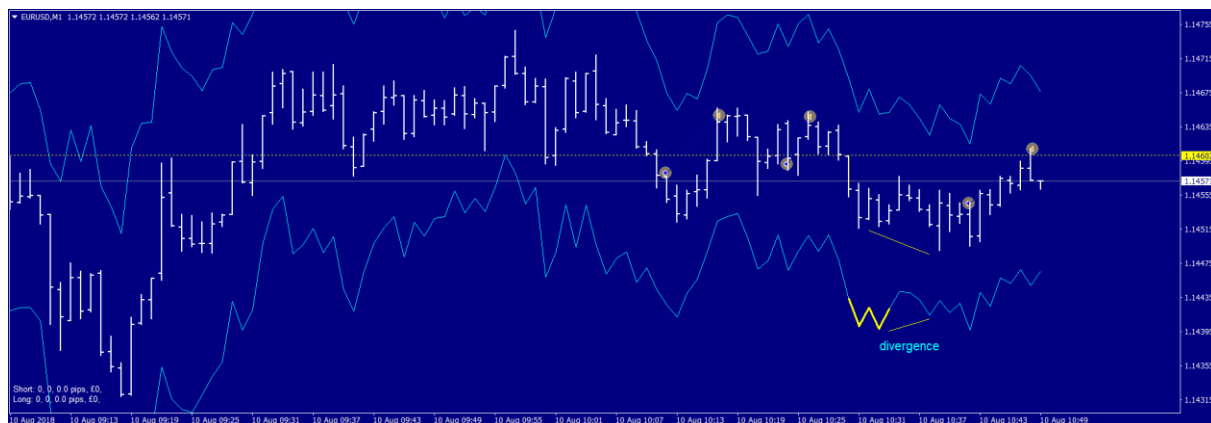


Patterns:





Divergence:



cTrader Links Help
TEMA FN

EURUSD, H1000
EURUSD, H100
1:15002
1:15000

Multiple was to use "Chaos system":)

Point 1-2

When you make trendlines on indicator, you can go trade when price touches the trendline OR when indicator touches the trendline.))

This example is great because indicator touched trendline and price was also on "normal" resistance.

Point 4

Price was in trendline channel for quite long time before breakout up again.. We could use it to enter buy because we had support on the indicator (n.5) + we were on trendline.

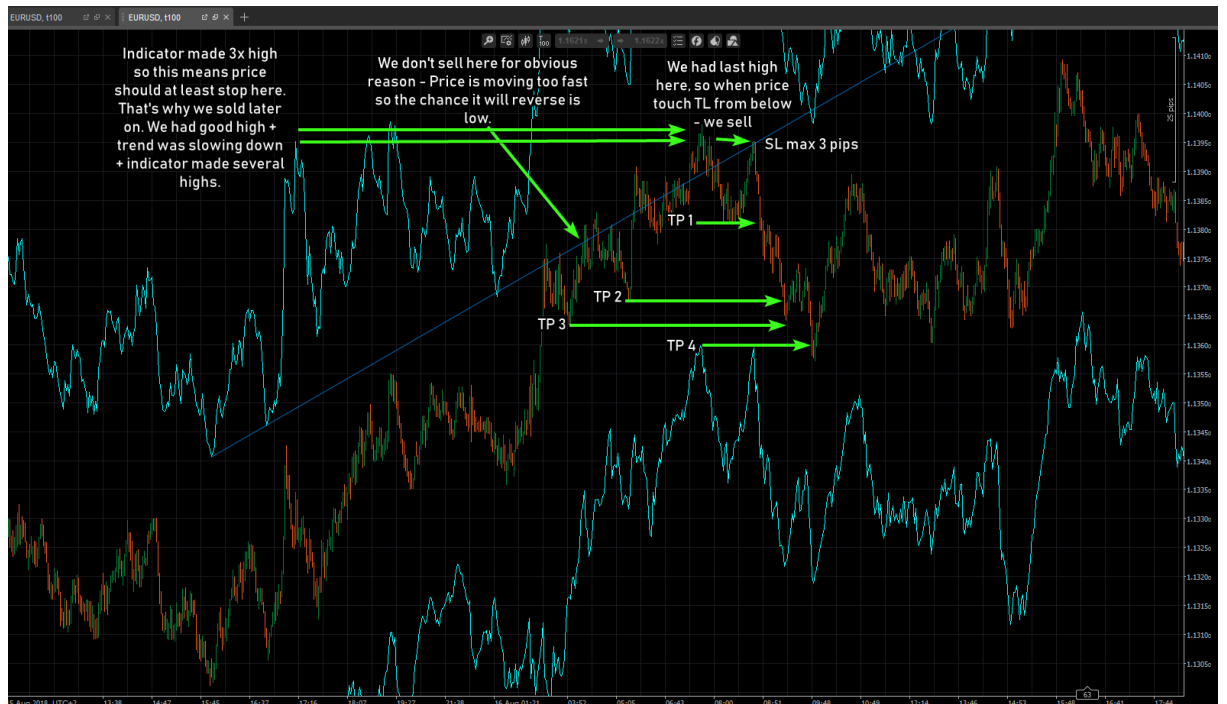
Point 3

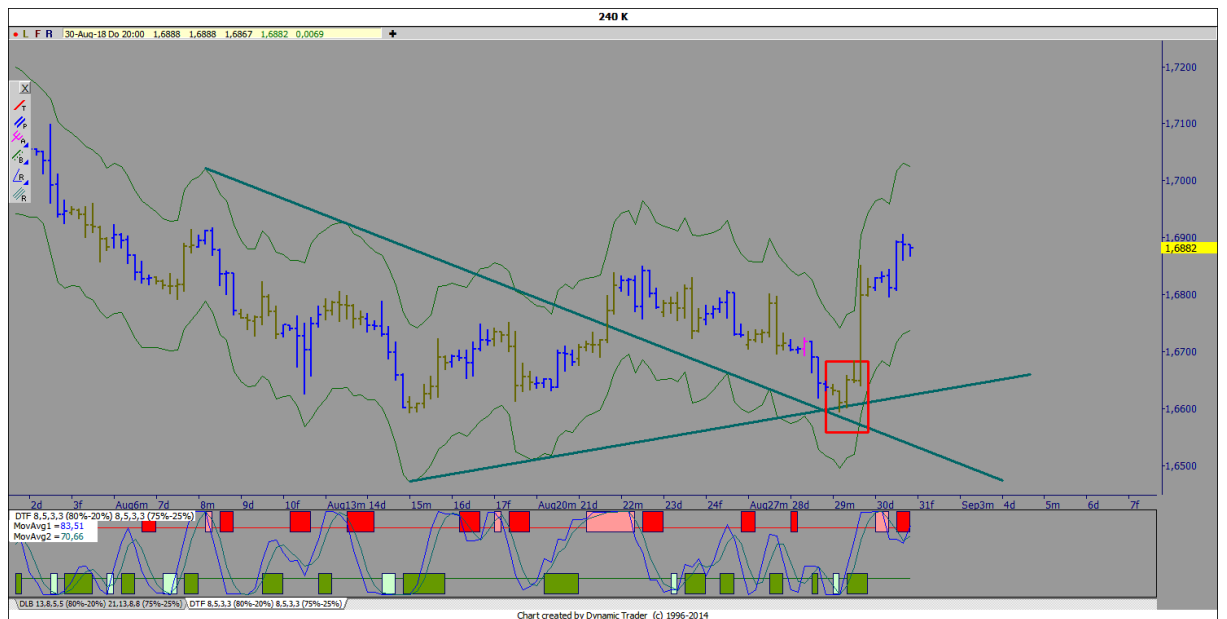
Notice interesting thing... When you have few trendlines close together, you can expect price to stay in the zone you made!)

...When the zone is sooo tight as You can see (number 3), you can't expect price going up so much.. It's nonsense. This angle is extreme.... No way price will stay in it for long period of time. Go sell as soon as possible.. Boom we have amazing pullback on 1.1540...

21/08/2018 08:05:20 UTC+2 (D) O: 1.15299 (H: 1.15344) (L: 1.15293) (C: 1.15340) (V: 5

Current Time: 22/08/2019 20:31:15 UTC+2 70 ms / 50 ms





Channel touching the latest price
(swig), H/L:

