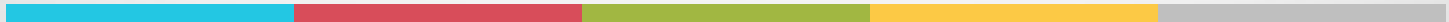

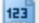
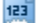



# **ZiShan' s** - Engulfing Paradise



## Zihan's EP: Filter

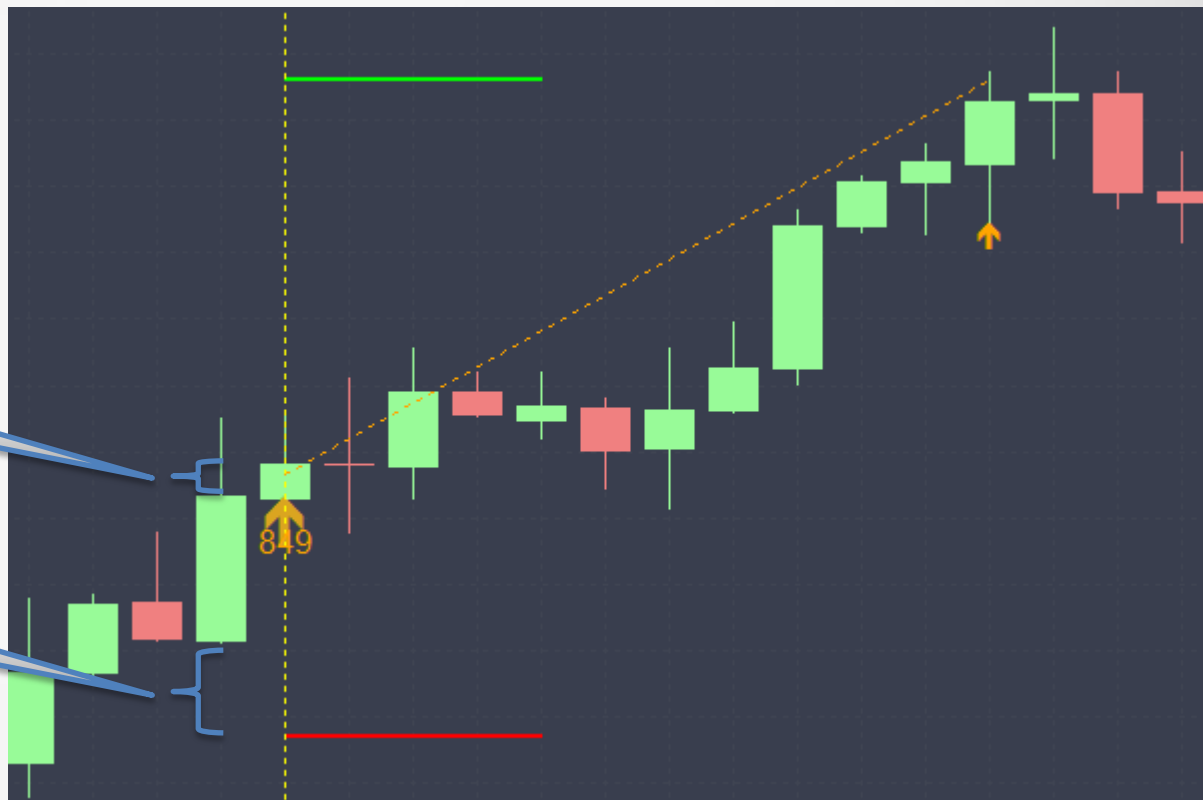
Filter for the trades!

ab	_	===== Filter Settings =====...
ab	_	//////////////// Filter for 'Moving Average' \\\\\\\\\\\\\\\\\\\
	Moving Average dir: use	false
	Moving Average dir: Period	25
	Moving Average dir: Mode	Exponential
	Moving Average dir: Applied price	Close price

## Zihan's EP: Entry & SL

Distance entry from Engulf Candle 50

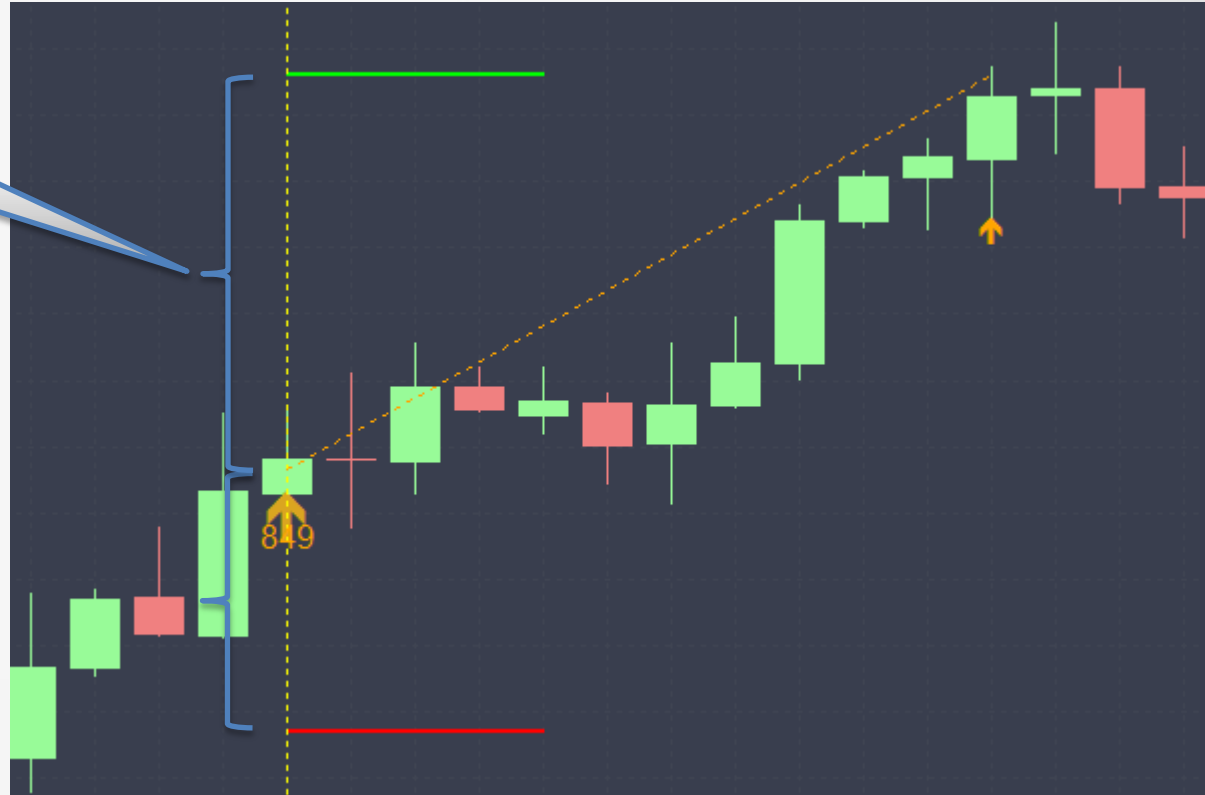
Distance SL from Engulf Candle 200



## Zihan's EP: RR

RR Factor

1.5



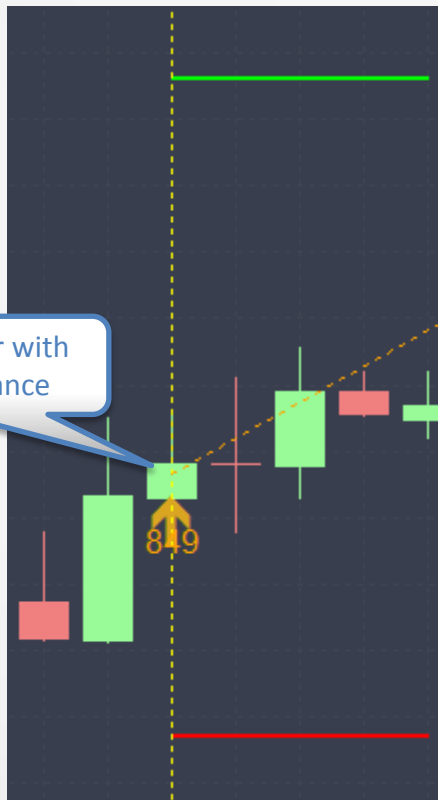
## Zihan's EP: RR



Entry late after new high/low

false

False: Enter with  
Close+Distance



True: Enter with  
High+Distance

