

Entry Rules

Screenshot1

- Buy signal of a particular pair will be generated once all the selected indicators agree in up (if pair is selected). (Refer to screenshot3,4,5)
 - TDI Price > TDI Signal: TC is green
 - Current TDI Price – Previous TDI Price > TDI Momentum Limit: TM is green
 - TDI Price < TDI overbought limit: TP is orange or green
 - Current H1 Heiken Ashi is green: HA is green
 - Price is inside H1 and H4 TMA upper and lower bands: H1 and H4 panel is orange
 - Current H1 candle is green; PA is green
 - Babon slope is uptrend [Slope(2)<Slope(1)]: S is green
 - Price>M5 TMA lower band; Price < (M5 TMA upper band – gap limit); and M5 TMA is uptrend (Current M5 TMA > Previous M5 TMA): M5 is green
 - Price is above Ichimoku cloud; ICHI is green
 - Absolute value of (Close – Open) of Previous M1 candle is less than Limit

Trading		1	2	3	4	5	6	7	8	9	10	
		Babon H1	Babon H1	Babon H1	Babon H1	Babon H1	Babon H1	Babon H1	Babon H1	Babon H1	Babon H1	
		TC	TM	TP	HA	H1	H4	PA	S	M5	ICHI	M1
Pair	Sprd											
EURNZD	3.2		3.4	58.5								

Screenshot2

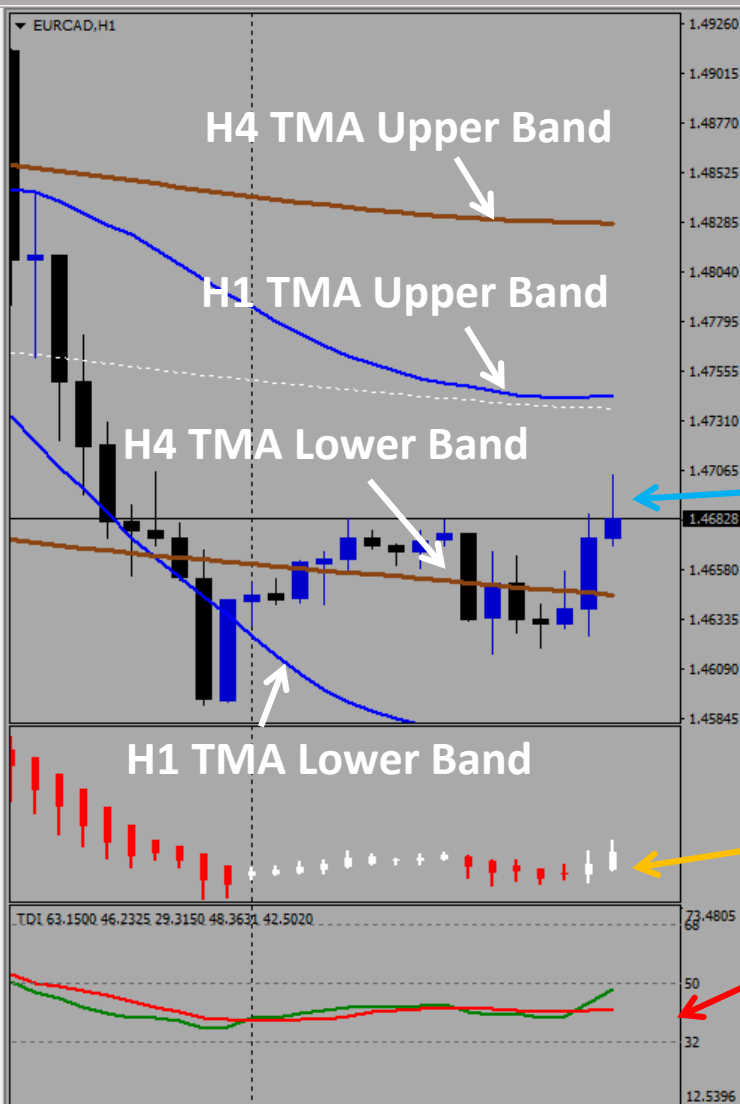
- **Sell signal of a particular pair will be generated once all the selected indicators agree in down (if pair is selected). (Refer to screenshot3,4,5)**
 1. **TDI Price < TDI Signal: TC is red**
 2. **Current TDI Price – Previous TDI Price < -TDI Momentum Limit: TM is red**
 3. **TDI Price > TDI oversold limit: TP is orange or red**
 4. **Current H1 Heiken Ashi is red: HA is red**
 5. **Price is inside H1 and H4 TMA upper and lower bands: H1 and H4 panel is orange**
 6. **Current H1 candle is red; PA is red**
 7. **Babon slope is downtrend [Slope(2)>Slope(1)]: S is red**
 8. **Price<M5 TMA upper band; Price > (M5 TMA lower band + gap limit);; and M5 TMA is downtrend (Current M5 TMA < Previous M5 TMA): M5 is red**
 9. **Price is below Ichimoku cloud; ICHI is red**
 10. **Absolute value of (Close – Open) of Previous M1 candle is less than Limit**

Trading

Pair	Sprd	1 TC	2 TM	3 TP	4 HA	5 H1	6 H4	PA	7 S	8 M5	9 ICH1	10 M1
AUDNZD	1.5	[Red]	-2.0	58.2	[Red]	[Orange]	[Orange]	[Red]	[Red]	[Red]	[Red]	[Orange]

Screenshot3

Babon H1 (Big Picture)



5 Price is inside H1 and H4 TMA bands
6 Price is uptrend

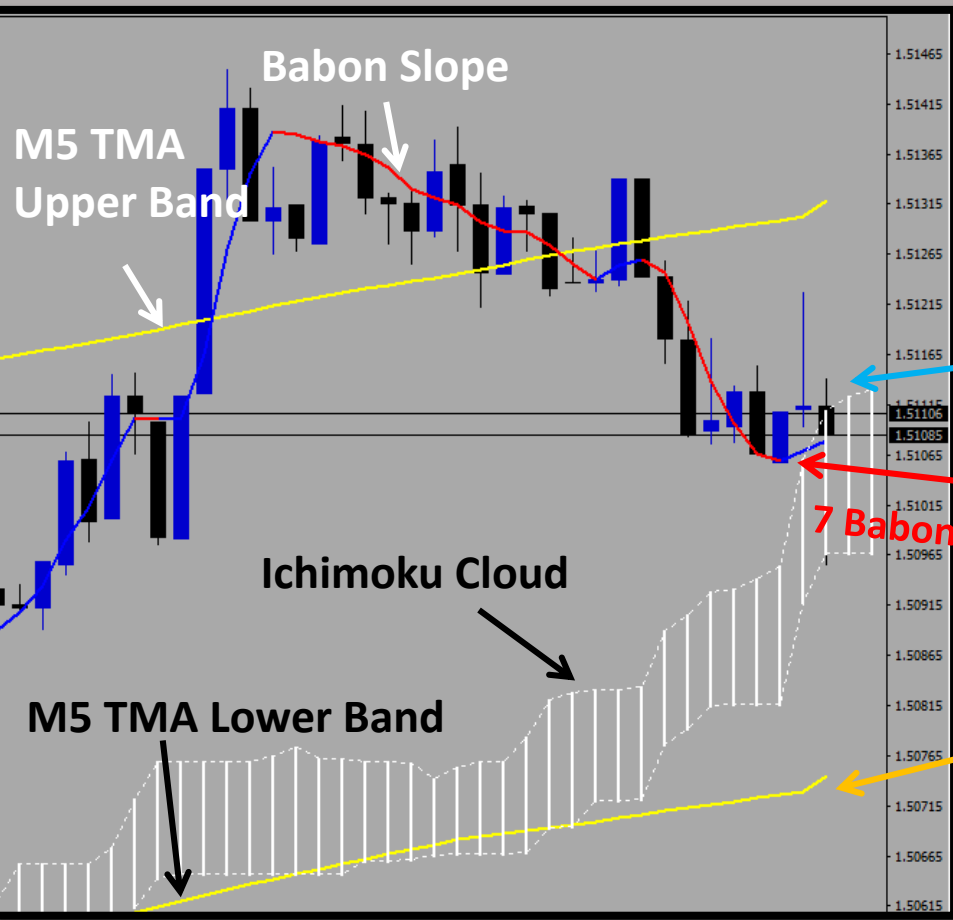
Trading		Babon H1			Babon H1			Babon H1		
		TC	TM	TP	HA	H1	H4	PA		
Pair	EURNZD									
Sprd	3.2									
			3.4	58.5						

4 H1 HA Candle is White

- 1 TDI Price (green) is above TDI Signal (red)
- 2 TDI Price uptrend (Current Price > Previous Price)
- 3 TDI Price is below overbought limit

Screenshot4

Babon A (M1)



9 Price is above Ichimoku cloud

10 Previous M1 growth is less than limit

Babon A M1			
S	M5	ICHI	M1
<div></div>	<div></div>	<div></div>	<div></div>
<div></div>	<div></div>	<div></div>	<div></div>

7 Babon Slope is uptrend

8 Price is inside M5 TMA band;
and M5 TMA is uptrend

Trading

Pair	Spred	TC	TM	TP	HA	H1	H4	PA	S	M5	ICHI	M1	Buy	Sell	Symbol	Profit	
AUDCAD	1.1		-5.3	47.4										0.00	0.00	AUDCAD	0.00
AUDCHF	1.0		-5.3	49.3										0.00	0.01	AUDCHF	0.56
AUDJPY	1.0		-5.7	57.2										0.00	0.00	AUDJPY	0.00
AUDNZD	1.7		-3.9	60.0										0.00	0.00	AUDNZD	0.00
AUDUSD	0.3		-5.8	41.1										0.00	0.00	AUDUSD	0.00
CADCHF	1.1		-3.6	51.4										0.00	0.00	CADCHF	0.00
CADJPY	0.4		-4.1	61.2										0.00	0.00	CADJPY	0.00
CHFJPY	1.3		-2.5	67.8										0.00	0.01	CHFJPY	1.38
EURAUD	1.6		5.9	50.6										0.00	0.00	EURAUD	0.00
EURCAD	0.8		4.2	48.5										0.00	0.00	EURCAD	0.00
EURCHF	0.4		1.1	49.3										0.01	0.00	EURCHF	0.46
EURGBP	0.6		-2.0	32.3										0.00	0.00	EURGBP	0.00
EURJPY	0.4		-2.0	68.3										0.00	0.00	EURJPY	0.00
EURNZD	3.2		3.4	58.5										0.01	0.00	EURNZD	0.49
EURUSD	0.1		0.1	33.4										0.00	0.00	EURUSD	0.00
GBPAUD	2.7		6.4	59.3										0.00	0.00	GBPAUD	0.00
GBPCAD	1.2		4.8	61.4										0.00	0.00	GBPCAD	0.00
GBPCHF	2.2		2.3	66.7										0.00	0.00	GBPCHF	0.00
GBPJPY	1.6		0.3	72.2										0.00	0.00	GBPJPY	0.00
GBPNZD	4.0		3.7	68.0										0.00	0.00	GBPNZD	0.00
GBPUSD	0.4		2.2	52.3										0.00	0.00	GBPUSD	0.00
NZDCAD	1.3		-0.3	37.2										0.00	0.00	NZDCAD	0.00
NZDCHF	1.6		-2.8	42.4										0.00	0.00	NZDCHF	0.00
NZDJPY	1.4		-4.3	53.1										0.00	0.00	NZDJPY	0.00
NZDUSD	0.7		-2.5	32.0										0.00	0.00	NZDUSD	0.00
USDCAD	0.7		4.3	63.2										0.00	0.00	USDCAD	0.00
USDCHE	0.5		0.3	65.7										0.00	0.00	USDCHE	0.00
USDJPY	0.4		-1.1	71.1										0.00	0.00	USDJPY	0.00

Profit Baskets= 0

Basket TP = \$ 15.00

Loss Baskets= 0

Basket SL = \$- 15.00

Highest= \$ 3.04

Lowest= \$- -1.72

2.89

CLOSE ALL

CLOSE PROFIT

CLOSE LOSS

AutoTrade

All

None

EUR

USD

GBP

JPY

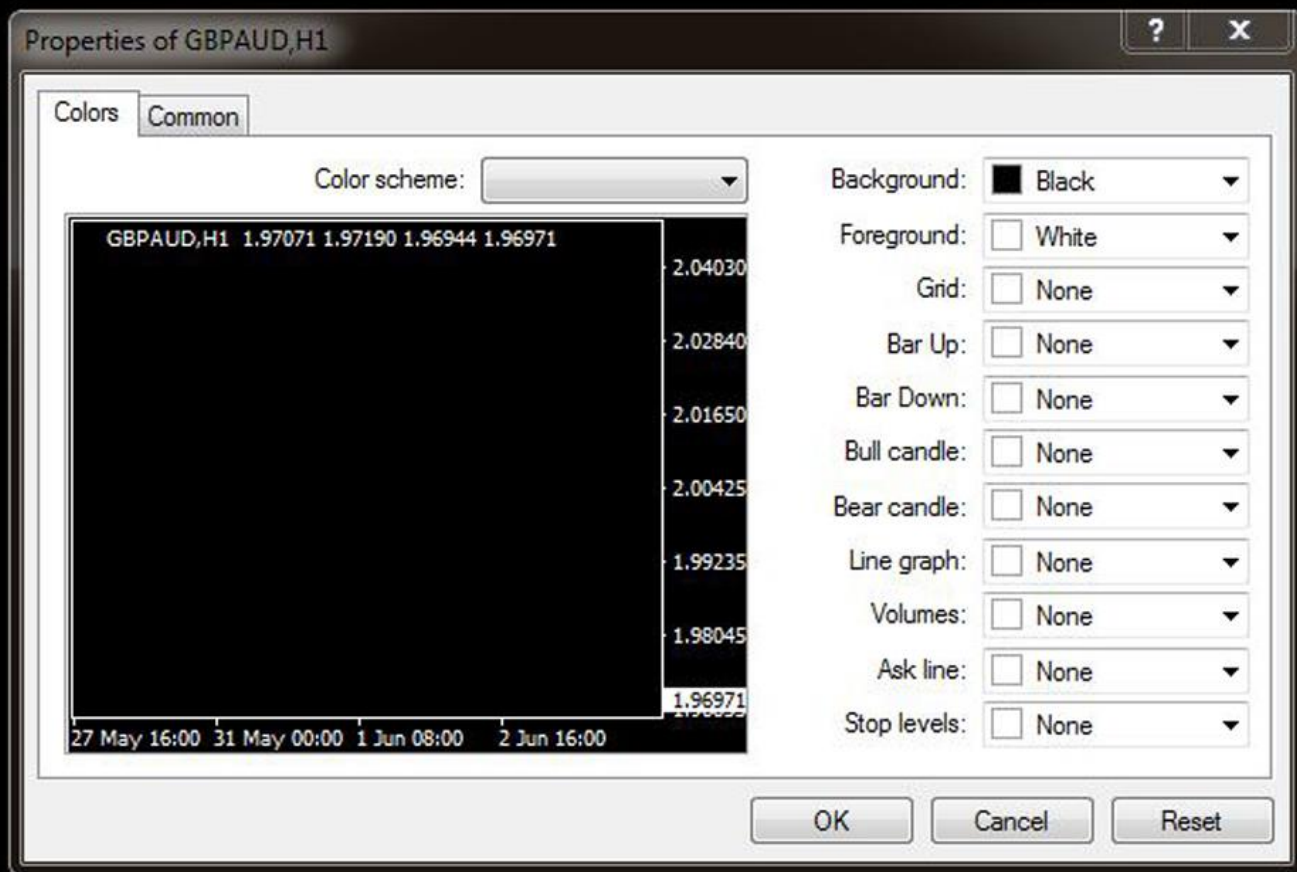
AUD

CAD

NZD

CHF

GBPAUD,H1 1.97071 1.97190 1.96944 1.96971

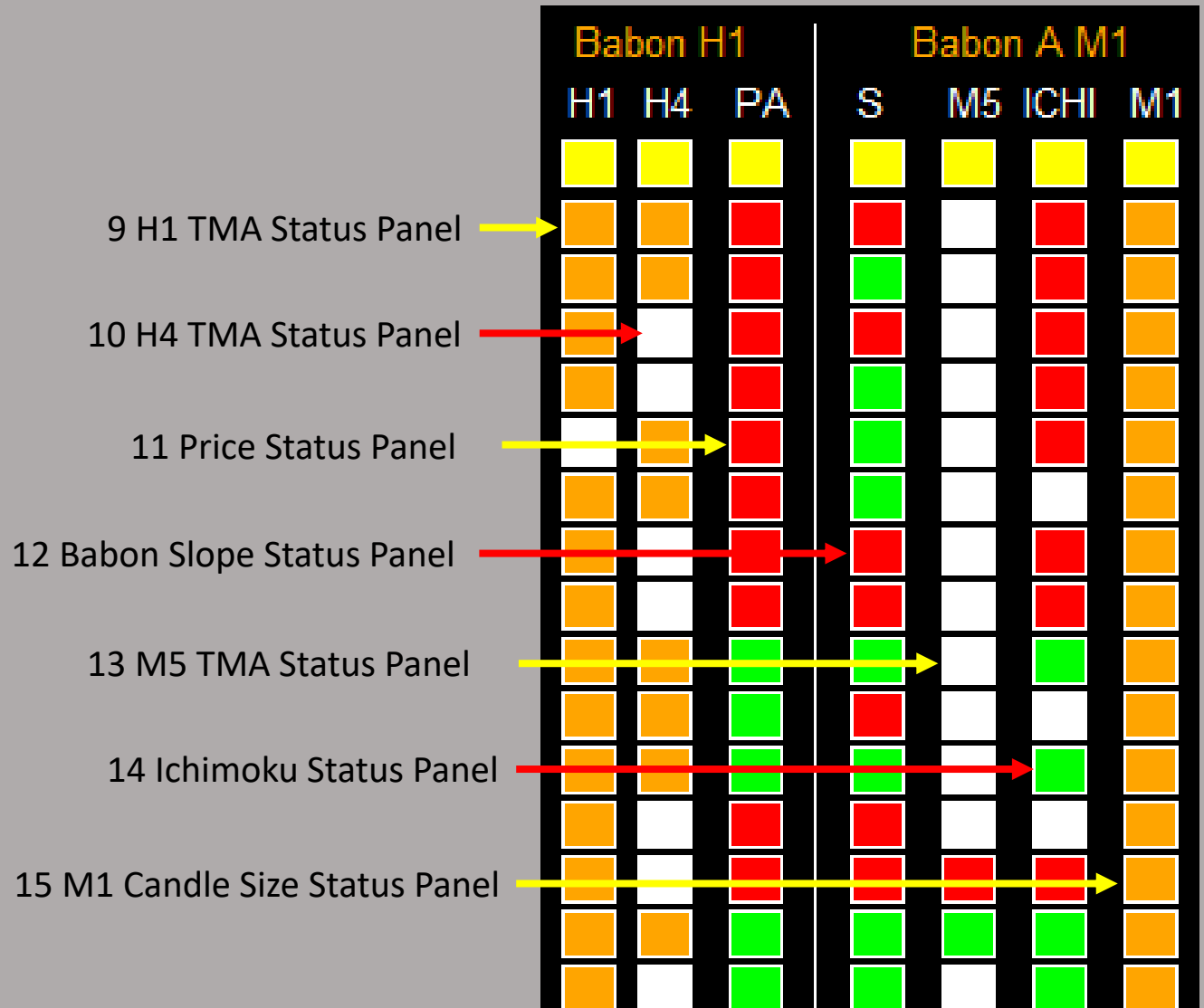


Screenshot6

6 May 2016 9 May 08:00 10 May 16:00 12 May 00:00 13 May 08:00 16 May 16:00 18 May 00:00 19 May 08:00 20 May 16:00 24 May 00:00 25 May 08:00 26 May 16:00 30 May 00:00

GBPAUD,H1

EURUSD,M1



Screenshot8

The screenshot displays a trading interface with a list of currency pairs. The interface includes columns for Buy, Sell, Symbol, and Profit. The currency pairs listed are AUDCAD, AUDCHF, AUDJPY, AUDNZD, AUDUSD, CADCHF, CADJPY, CHFJPY, EURAUD, EURCAD, EURCHF, EURGBP, EURJPY, EURNZD, EURUSD, GBPAUD, GBPCAD, GBPCHF, GBPJPY, GBPNZD, GBPUUSD, NZDCAD, NZDCHF, NZDJPY, NZDUSD, USDCAD, USDCHF, and USDJPY. The interface also features Buy, Sell, and Close buttons for each pair. Annotations highlight specific buttons and columns:

- 16 Buy Button:** Points to the 'B' button for AUDCAD.
- 17 Sell Button:** Points to the 'S' button for CADCHF.
- 18 Close Button:** Points to the 'C' button for EURCAD.
- 19 Buy Volume Column:** Points to the '0.00' value in the Buy Volume column for AUDCHF.
- 20 Sell Volume Column:** Points to the '0.00' value in the Sell Volume column for AUDNZD.
- 21 Symbol Column:** Points to the 'CADJPY' symbol in the Symbol column.
- 22 Profit Column:** Points to the '0.00' value in the Profit column for EURCAD.

Additional text on the left side of the image states: "will open at most 1 pair based on ated. If signal position already particular pair, no sent. However, ually click on 'B' utton to any positions you want end one order)." and "Screenshot".

Autotrade will open at most 1 position per pair based on signal generated. If signal occurs but position already exists for a particular pair, no order will be sent. However, you can manually click on 'B' and/or 'S' button to any number of positions you want (click once send one order).

Screenshot9

23 Profit Baskets

Profit Baskets=

0

24 Basket TP

Basket TP = \$

15.00

Highest= \$

0.00

25 Basket Highest

26 Loss Baskets

Loss Baskets=

0

27 Basket SL

Basket SL = \$-

15.00

Lowest= \$-

0.00

28 Basket Lowest

29 Current Basket
Profit

0.00

Screenshot10

30 Close All

CLOSE ALL

CLOSE PROFIT

CLOSE LOSS

31 Close Profit

32 Close Loss

Trading

33 Session Monitor Panel

34 AutoTrade Monitor Panel

35 Pair/Currency Selection Button

AutoTrade

ON

All

None

EUR

USD

GBP

JPY

AUD

CAD

NZD

CHF

Screenshot11

Variable	Value
Use AutoTrade	true
Send Alert upon Signal	false
Send Notification upon Singal	false
Single pair TP in pips (0=no TP)	25.0
Single pair SL in pips (0=no SL)	25.0
TDI Setting	RSI Price Lline=2; Trade Signal Lline=7
RSI Period (8-25)	13
RSI Price (0-6)	0
Use TDI Cross	true
Use TDI Momentum	true
TDI Momentum Threshold	2.0
Use TDI Overbought Oversold Limit	true

Once alert/notification of a particular pair has been sent, the next alert/notification of that pair will be sent after 5 minutes upon signal.

Variable	Value
Use Babon Slope	true
Slope Period	10
Slope Method	LWMA
Slope Applied Price	MA_Close_Price
Use TMA M5	true
Price to TMA M5 Band Gap Limit	10
Use Ichimoku	true
Tenkan-sen	9
Kijun-sen	26
Senkou Span B	52
Use Previous M1 Candle Size	true
Previous M1 Candle Size Limit	10.0
Magic Number	12345
Lot Size	0.01
Basket TP in \$	15
Basket SL in \$	15
Max Spread	2.0

Screenshot12

Basket means all active (open) positions opened by this dashboard with the same magic number. The basket profit is the total profit of all these active positions