

Indicator:  

## Fibonacci level needed

0.0 : apply to close price

23.6 : (part A Trade).. For (1st) First Entry

50.0 : (part B Trade).. For (1st) First Entry

38.2 : (part A Trade)..For (1st)exit Or Tp 1  
Or First Exit

75.0 : (part B Trade)..For (1st)exit Or Tp 1  
Or First Exit

261.8 : (part A & B)..Recovery Trade/Zone Mark

it impossible for part A and B form the same  
candle signal to get recovery trade at same time.

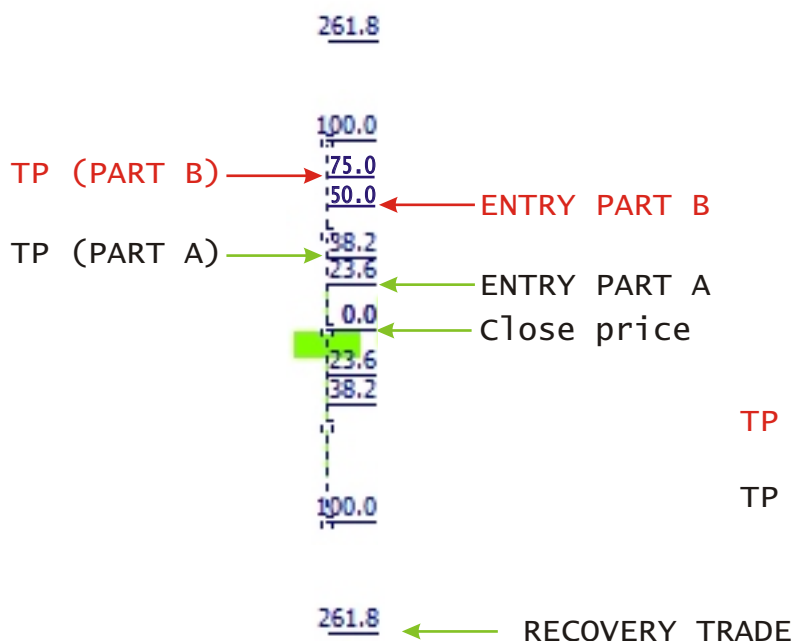
Reason:

Part a trade will end before part b trade can start

Example... Check trade setup

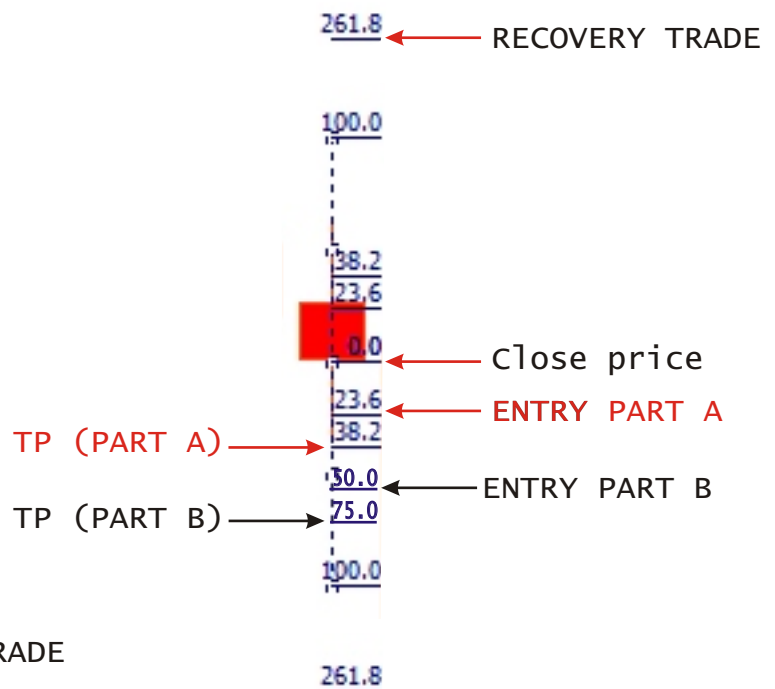
### BUY SETUP

If price go up



### SELL SETUP

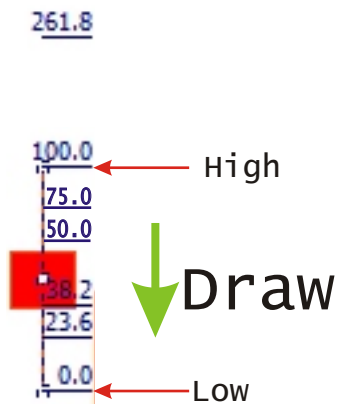
If price go DOWN



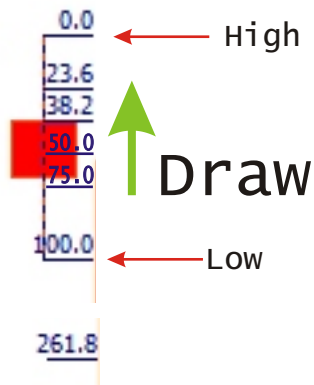
## CANDLE SETUP

1. wait for candle close
2. Draw fibonacci from

(A) high to low

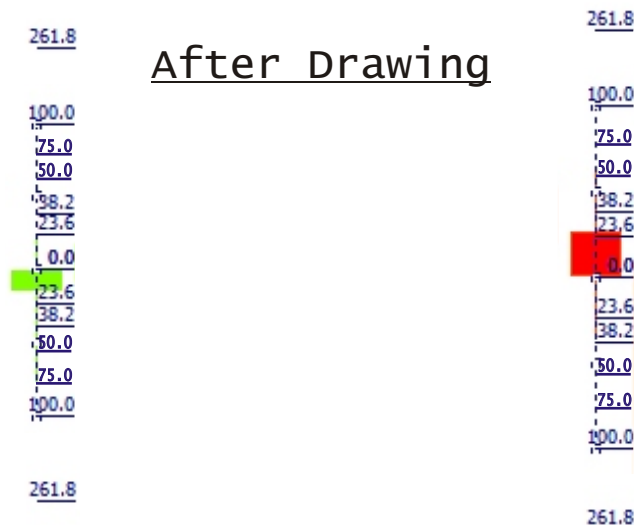


(B) low to high



3. Move fibonacci 0.0 to close price using the middle dot

(double click on the fibonacci drawing, it changes to 3 dot, 1 dot at 0.0 1 dot at 100.0 and 1 middle dot)



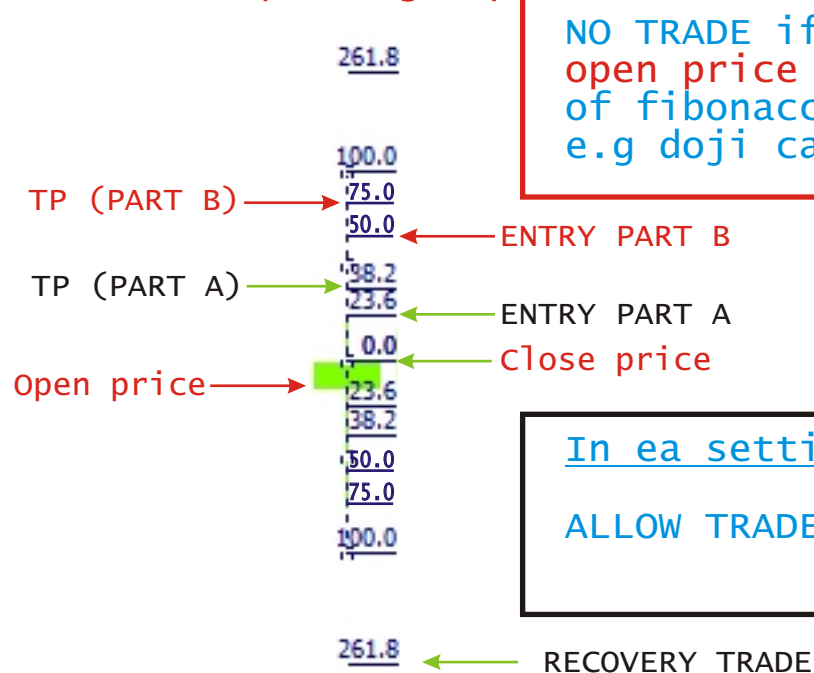
# BUY SET UP AND SELL SET UP EXAMPLES

EA should place a buy order if

(i) close price of fibonacci candle is higher than open price.

## BUY SETUP

If price go up



(ii) if broker spread is less than the distance between Tp and Entry.

(Note: EA should read Broker spread from 0 to 1 as 1,....1.01 to 2 as 2, ...2.01 to 3 as 3 e.t.c.)

(Iii) next candle price touch and break Fib 23.6 OR Fib 50.0 before candle close.

A **TRADE (Part A or B)** IS ESTABLISHED  
IF i, ii, iii CONDITION IS GOOD OR PASSED.

NO TRADE if open price = close price of  
fibonacci candle e.g doji candle

After TRADE (A or B) is established

Tp Or Exit is at Fib 38.2(Part A)

Fib 75.0(Part B)

(Ea should never close trade if  
profit/sequence is minus)

(close trade with hedge and close by  
wait 10 minutes between the hedge and closure)

if price fail to get to Tp  
or Exit BUT get to

Fib 261.8 and break

Recovery trade 2 Start.

# IF TRADE 2 IS VALID OR IN PLACE A SEQUENCE OR BASKET IS GENERATED

## INPUT 14 LOT

LotSize1 = 0.2  
LotSize2 = 0.8  
LotSize3 = 1.6  
LotSize4 = 3.2  
LotSize5 = 6.4  
LotSize6 = 12.8  
LotSize7 = 25.6  
LotSize8 = 51.2  
LotSize9 = 102.4  
LotSize10 = 204.8  
LotSize11 = 409.6  
LotSize12 = 819.2  
LotSize13 = 1638.4  
LotSize14 = 3276.8

Recovery trade or zone is for  
break even = Break even  
process start @ trade 2

(Ea should never close trade if  
profit/sequence is minus)

when the break even level is reached, disable  
the targets And only close at break even.  
Do this too with hedge and close by  
wait 10 minutes between the hedge and closure



Hide all Entry/Target/recovery  
trades = no pending orders

entry/Target/Recovery trade might  
be invisible lines for the Ea only

create a box ☐ = by default 15 means 15%  
IF total PROFIT IS (-) MINUS 15% OF BALANCE

NO NEW SEQUENCE OR BASKET/  
new sequence not allowed

on the trading account(TRUE OR FALSE INPUT).

 Enable Max DD for new sequences	true
 Max DD for new sequence (%)	30.0

EA SHOULD SIMULTANEOUSLY WORK ON  
ALL TIME FRAME@ same time, MULTIPLE  
CHART@ same time, ALL PAIRS @ same time,  
all broker AND ALL PLATFORM

EA SHOULD AVOID THIS ERROR: The problem of restart MT4  
(or with my weekly VPS maintenance restarts)  
the EA "forgets" where it was in the chain of trades  
and restarts itself from Batch1/Trade1... Not good...  
Since "MT4 restarts" can happen at anytime,  
EA will be unreliable THIS WAY,

ANY ADDITION OR SUBTRACTION  
TO MAKE THIS EA TO WORK FINE WILL  
BE HIGHLY APPRECIATED... THANKS